

# Epsom & Ewell Borough Council Invites Community to Share 'A Million Acts of Hope'

18 June 2026



Epsom & Ewell Borough Council, in partnership with the Epsom & Ewell Refugee Network, is inviting residents to take part in *A Million Acts of Hope* during Refugee Week this June - celebrating the everyday actions that bring people together and strengthen communities.

*A Million Acts of Hope* is a national initiative recognising the small but meaningful contributions people make to their community each day. From coaching youth teams and volunteering at food banks to supporting neighbours and caring for shared spaces, these acts may go unnoticed, but they play an important role in building compassionate and connected communities.

Running from 15 June to 21 June, Refugee Week offers an opportunity to recognise the contributions of refugees, while celebrating the diversity, resilience and community spirit that enrich local life. This year, the borough will also mark *A Million Acts of Hope* during the same week, highlighting how simple actions can help create a more welcoming and inclusive place for everyone.

These shared values are reflected in the work of the Epsom & Ewell Refugee Network (EERN), which supports refugees to feel welcomed, connected and part of the community. EERN, which is partly funded by Epsom & Ewell Borough Council, delivers a range of services, including: group activities, helpdesk support, language classes and community initiatives - all designed to help foster inclusion and understanding.

To encourage residents to get involved, *A Million Acts of Hope* boards were installed at Epsom Library and Ewell Library (Bourne Hall) this week. The CEO of Epsom & Ewell Borough Council, Jackie King, Councillor Clive Woodbridge, Chair of the Community & Wellbeing Committee at Epsom & Ewell Borough Council, the Mayor of Epsom & Ewell, Councillor Lucie McIntyre and Epsom & Ewell Refugee Network Lead, Jo Sherring, have all added their messages to the board. We encourage visitors to share messages of kindness, gratitude or community spirit.

Participants can write a short note on a postcard, available at both locations, and add it to the display, creating a collective expression of hope across the borough.

Speaking of the upcoming events, Councillor Clive Woodbridge, Chair of the Community and Wellbeing Committee, said:

"Epsom & Ewell is a borough defined by the strength of its community, and initiatives like *A Million Acts of Hope* highlight the kindness, compassion and generosity that bring our residents together. It has been truly heartwarming to read the many stories already shared on the boards across the borough, each one reflecting small but meaningful acts of care, gratitude and support.

These stories capture what makes Epsom & Ewell such a special place to live, and I encourage residents to continue adding their voices as we come together to celebrate hope and the power of community."

Epsom and Ewell Borough Council



Image EEBC: from left to right: Chair of the Community & Wellbeing Committee, Councillor Clive Woodbridge, Mayor of Epsom & Ewell, Councillor Lucie McIntyre and Epsom & Ewell Refugee Network Lead, Jo Sherring.

---

## Epsom and Ewell Local Plan next phase

18 June 2026



We are contacting you to remind you about a Planning Policy consultation being carried out by Epsom & Ewell Borough Council on Additional Documents Submitted by the Council during the Local Plan Examination. The consultation will close at 23:59pm on Monday 15 June 2026. Thank you to those that have responded to our consultation already.

The consultation, additional documents and response form can be accessed on our consultation portal using the link below: <https://epsom-ewell.inconsult.uk/localplan.additionaldocuments>

Reference copies of the consultation documents along with copies of the response forms are available from the Town Hall and borough Libraries during opening hours.

If you have any questions about the consultation, or do not wish to receive future communications on planning policy consultations in the borough, please contact a member of the planning policy team using the methods below:

Email: [localplan@epsom-ewell.gov.uk](mailto:localplan@epsom-ewell.gov.uk)

Phone: 01372 732000 Examination

Hearing:

Please note that a further Examination Hearing will be held on Thursday 2 July 2026 and will commence at 09:30am at:

Epsom Town Hall

The Parade

Epsom

Surrey

KT18 5BY

The Hearing can be attended by interested members of the public who wish to observe proceedings. Friday 3 July 2026 is a Reserve Day, if required. If you wish to participate in the Hearing you need to indicate this in your response to the consultation and confirm your request to attend with the Programme Officer by the close of the consultation by

emailing: [bankssolutionsuk@gmail.com](mailto:bankssolutionsuk@gmail.com).

Further information on the additional Hearing will be published on our Examination webpage:

Local Plan Examination | Epsom and Ewell Borough Council

The Planning Policy Team

## Bourne Hall hosts Summer Festival

18 June 2026



Epsom & Ewell Borough Council is pleased to announce that Bourne Hall will host a free Summer Festival on Saturday, 20 June 2026, from 12pm until 5pm.

The free event promises fun for all the family, with live music, food, fairground activities, craft stalls and plenty to enjoy throughout the day.

The main stage will showcase a variety of live music performances, featuring talented local artists and bands. Artists supported by iPlay Collective, a local creative organisation that nurtures emerging performers and champions inclusive access to the arts, will perform across the day. Audiences can expect a lively and varied programme celebrating local talent and a wide range of musical styles, with a DJ host keeping the atmosphere buzzing between sets.

Festival-goers can browse a wide selection of market stalls showcasing unique handcrafted items from local makers and artisan sellers. Visitors will find a diverse range of goods including seated acupressure therapy, hand-turned wooden gifts and homeware, jewellery, laser-engraved cheese and serving boards, handmade woodwork and textiles, locally produced Tropic organic skincare and make-up, daily essentials and health supplements, alongside homemade gifts, keyrings, stickers, prints and cross-stitch items. There will also be handmade natural soaps, stone and crystal candles, as well as

stalls supporting good causes, including a dog rescue offering gifts and a tombola. The Rainbow Leisure Centre will also be present, promoting healthy lifestyles and community wellbeing.

In addition to the stalls, several local organisations and venues will be hosting activities throughout the day. These include the Home Improvement Agency, Epsom Playhouse, the Dementia Hub, Bourne Hall Museum and Ewell Library, ensuring there is plenty to explore and engage with for all ages.

For those looking for thrills, the fairground will feature trampolines and teacup rides. There will also be merchandise stalls selling balloon animals and bubbles, adding to the festive atmosphere.

A variety of outdoor food options will be available, including burgers, nachos, ice cream and candyfloss, alongside refreshments from the Flying Saucer Café, which will be open from 9am until 5pm serving hot and cold drinks and treats.

Speaking of the upcoming event, Councillor **Clive Woodbridge**, (RA Ewell Village) Chair of the Community & Wellbeing Committee said:

“The Bourne Hall Summer Festival is a wonderful opportunity for our community to come together and enjoy a full day of free, inclusive entertainment. We’re delighted to be showcasing talented local musicians, including artists supported by iPlay Collective, who play such an important role in nurturing emerging performers.

“Alongside the live music, visitors can explore a fantastic selection of artisan and craft stalls, offering unique handmade goods from local makers – the perfect chance to support independent businesses and discover something special. With great food, creative talent and activities for all ages, the festival really highlights the vibrant community spirit of our borough.”

Event timetable is subject to change.

The Bourne Hall Festival is an annual event with a different theme each year. Previous iterations have included Sustainability, The Herald of Spring and New Beginnings. This year’s festival will run from 12pm to 5pm.

Bourne Hall’s address is Spring Street, Ewell, Surrey, KT17 1UF.

[www.bournehall.org](http://www.bournehall.org)

**Driving Directions:**

Bourne Hall is easily accessible from:

Gatwick via M25 - A217 - A240

Heathrow via M25 - A3

London via A3

Please check your directions at [www.theaa.com/route-planner/index.jsp](http://www.theaa.com/route-planner/index.jsp)

**Parking:**

Local pay & display car parks:

Bourne Hall, Spring street

24 hours Monday to Sunday

High Street, Ewell

24 hours Monday to Sunday

Dorset House, High street, Ewell

24 hours Monday to Sunday

**Train:**

The nearest railway station is Ewell West (5 minutes’ walk) with regular direct rail routes between Guildford and Waterloo. Please plan your journey at [www.nationalrail.co.uk](http://www.nationalrail.co.uk)

**Bus**

Bus number 293, 406, 467, S2 and E16

**Live Music: 12:00 - 17:00**

Enjoy a diverse range of musical genres that will keep you entertained and dancing all day long with a DJ host.

**Market Stalls: 12:00 - 17:00**

Explore a vibrant array of market stalls showcasing local crafts, products, and more. It’s the perfect opportunity to support local businesses and find unique treasures.

**Food Stalls: The Flying Saucer Café 09:00 - 17:00, Food stalls 12:00 - 17:00**

A selection of food will be available, offering a range of tasty treats and refreshments.

Epsom and Ewell Borough Council



# New moped bays introduced to tackle pavement parking in Epsom High Street

18 June 2026



Epsom & Ewell Borough Council have established new moped-only parking spaces outside the Town Hall in a bid to combat pavement parking on Epsom High Street.

The issue of delivery riders mounting kerbs outside fast-food restaurants has been a cause of significant concern for residents and visitors in recent years. Vehicles blocking pavements create serious safety risks for pedestrians, particularly wheelchair users, those with visual impairments, and parents with prams and pushchairs.

The bays are the latest measure in the council's multi-agency approach to the problem. Motions have been successfully passed at both Epsom & Ewell Borough Council and Surrey County Council calling for dedicated motorcycle parking at all new retail and takeaway developments, the introduction of "round-table" discussions with delivery apps such as Uber Eats and Deliveroo, and stronger enforcement of parking regulations.

The Epsom Business Improvement District (Go Epsom) is also working directly with restaurants and delivery riders to promote the use of these dedicated bays as a faster and legal alternative to pavement parking.

The local initiative coincides with a significant national policy shift. On 8 January 2026, the Department for Transport responded to a long-awaited consultation, announcing new powers for local authorities to tackle pavement parking more effectively.

Unlike the previous street-by-street approach, which was often slow and costly to implement, the new secondary legislation will allow councils to enforce against "unnecessary obstruction" more easily.

Councillor **Steven McCormick**, (RA Woodcote and Langley) Chair of the Planning Committee and a member of Surrey County Council's Communities, Environment and Highways Select Committee, said:

"Pavements are for people, not for motorised shortcuts. We've heard from residents who have been forced into the road because the footway is entirely blocked. We are committed to making the High Street safe for everyone. The new moped bays that Epsom & Ewell have provided will mean there is no longer any excuse for this unacceptable and inconsiderate parking."

"I also welcome the announcement of new powers from the Department for Transport. As soon as this national legislation is fully enacted, I will be pushing Surrey County Council to implement a new Traffic Regulation Order specifically designed to curb pavement parking across the borough.

"This TRO will provide the 'teeth' that enforcement officers have lacked, allowing them to issue civil penalties."

Epsom and Ewell Borough Council



Related reports:

[Problem Pavement Parking Powers Promised](#)

[Pavement Parking: Epsom & Ewell MP Speaks Out](#)

[Epsom High St in need of more love?](#)

[Bikes that blight the blind](#)

---

## Last round of developers' funds in Epsom and Ewell

# to be spent

18 June 2026



Epsom & Ewell Borough Council is inviting local community groups and organisations to apply for funds, raised by the Community Infrastructure Levy (CIL), to deliver projects that benefit residents and support new development across the borough.

**Bid applications will open on Monday 9 March 2026 and close on Sunday 17 May 2026.**

This will be the final time that Epsom & Ewell Borough Council will run this funding process. From April 2027, the council will be dissolved and replaced by the new East Surrey Council, which will be responsible for delivering local infrastructure projects across the geographic areas of Elmbridge, Epsom & Ewell, Mole Valley, Reigate & Banstead and Tandridge.

When new development takes place, it can place extra pressure on local services and facilities. The Community Infrastructure Levy enables councils to raise funds from development to be spent on the provision, improvement, replacement, operation or maintenance of local infrastructure—the levy is intended to give councils more choice and flexibility in how they fund the infrastructure required to support local growth.

Last year, Epsom & Ewell Borough Council allocated over ?230,000 from the 2024/2025 Neighbourhood CIL Fund for community infrastructure projects, including:

- a permanent secure storage shed for The Library of Things enabling residents to borrow useful household items
- energy-efficient lighting installed in a pedestrian tunnel for the Cattle Arch/Under-Rail Tunnel project
- a Road Safety Outside School Scheme implemented at Linden Bridge School improving pedestrian accessibility, a safety crossing for children on Grafton Road and traffic flow aids.

Councillor **Neil Dallen** (RA Town) , Chair of the Strategy and Resources Committee said: “This Neighbourhood Community Infrastructure Levy funding is a real opportunity to make a meaningful and lasting difference in our community. As this will be the last chance to apply through Epsom & Ewell Borough Council, we strongly encourage local community groups and organisations to put forward ideas that could benefit their neighbourhoods.

“We’re proud that the Neighbourhood CIL funding has already helped deliver a wide range of successful local projects – from the recently installed 3G football pitch at Glynn School, to secure specialist bike storage for Wheels for Epsom, the regeneration of disused grounds at the Horton Arts Centre, and the water fountains installed at various locations across the borough. These achievements show just how powerful this funding can be when community ambition and local investment come together.

“As the council launches its final tranche of Neighbourhood Community Infrastructure Levy funding, we want to ensure that money raised from new development continues to support projects that strengthen our community and improve the quality of life for residents across the borough for years to come.”

## Application process

The bidding process is designed to be as clear as possible and the application form — available to download from the council’s website, with hard copies at Epsom Town Hall, Bourne Hall and Epsom Playhouse — aims to help make the process simpler. Neighbourhood CIL Funding | Epsom and Ewell Borough Council

Bids will be shortlisted using the criteria set out in section C of the CIL Spending Protocol (adopted March 2025). More information on the process and prioritisation criteria can be found in section 5 of the CIL Spending Protocol.

To receive funding, all CIL spending applications must be for infrastructure. All bids that pass stage 1 of the assessment process will be examined by the CIL Member Working Group, who will make recommendations to the Strategy and Resources Committee for approval.

**It is important for each application to be completed in full. The CIL Spending Protocol (adopted March 2025) needs to be read alongside the application form.**

Any questions about the application form or process can be emailed to: [CIL@Epsom-Ewell.gov.uk](mailto:CIL@Epsom-Ewell.gov.uk).

## About the Community Infrastructure Levy (CIL)

- The Community Infrastructure Levy (CIL) allows councils to raise funds from new developments for infrastructure projects which help to mitigate the impacts of new development. Of the total collected:
  - 80% goes towards strategic borough-wide infrastructure - examples include highway schemes, permanent school expansions, hospitals, and other health and social care facilities

- 15% is allocated for local projects (neighbourhood CIL) a portion of the CIL is to be spent on local projects in accordance with the CIL regulations and aligns with the Corporate Plan - examples include sport pitches, courts upgrades, public realm improvements and community gardens
- 5% for the day-to-day costs of administering CIL.
- The Epsom & Ewell Borough Council CIL Spending Protocol was approved by the Licencing and Planning Policy Committee on 11 March 2025.
- The CIL Spending Protocol sets out the Epsom and Ewell Borough specific protocol governing the process and criteria for selecting infrastructure projects for funding through CIL. When completing a CIL bid form please read the CIL Spending Protocol alongside, as this sets out the guidance and criteria required for your Neighbourhood CIL bid application.
- More information about the Neighbourhood CIL Fund can be found here: <https://www.epsom-ewell.gov.uk/Neighbourhood-CIL>

Epsom and Ewell Borough Council



## Council agrees to continue jobseeker support in Epsom & Ewell

18 June 2026



On 27 January 2026, Epsom & Ewell Borough Council’s Strategy & Resources Committee approved continued funding and delivery arrangements for the Epsom & Ewell Hub (EE Hub). This decision ensures that this valuable community service can continue helping residents develop their skills, build confidence and improve emotional wellbeing in an easily accessible location— supporting more residents to move successfully into employment. Between 2022-2025, over 1,319 residents registered with EE Hub.

The EE Hub will continue to be delivered by Surrey Lifelong Learning Partnership - a local charity that is active in employment support, skills training and community learning.



Councillor **Clive Woodbridge** (RA Ewell Village), Chair of the Community & Wellbeing Committee, said: “We are extremely proud to continue supporting the Epsom & Ewell Hub, which has become an invaluable resource for residents taking positive steps towards work.

“The Hub’s strength lies in its holistic, people-centred approach—helping individuals overcome both practical barriers to employment and the anxiety or low confidence that can often accompany time out of work. For many, challenges linked to education, confidence or personal circumstances can hinder progress, and the Hub provides exactly the support needed to move forward.

“Over the past five years, the Hub has built strong partnerships with local businesses, NESOT and DWP Jobcentre work coaches, which are essential to helping residents access training and meaningful opportunities.

“I am delighted that we are continuing our partnership with Surrey Lifelong Learning Partnership to deliver this service, and I would like to thank them—and all our partners—for their commitment to providing such an effective and supportive

resource for our borough.”

### **EE Hub services available**

The Epsom & Ewell Hub provides free support for residents entering the workforce or returning to work, offering help with CVs, interviews and interpersonal skills, while also supporting those facing barriers such as anxiety or low confidence. Its holistic approach includes creative activities that build resilience, and it maintains strong links with local employers—connecting jobseekers to opportunities across organisations and high street businesses—and hosting regular job fairs.

Digital support is also available, helping anyone who wants to set up a mobile phone, access email through to using Microsoft Office or finding jobs online.

Residents can also access complementary programmes and training such as Work Well, which supports adults with long-term conditions to re-engage with employment; and Multiply, a numeracy skills initiative.

Mandy Boshier, Deputy Chief Executive, Surrey Lifelong Learning Partnership said: “We are delighted that, with the support of Epsom & Ewell Borough Council, the Epsom & Ewell Hub has been able to help residents build new skills and gain the confidence needed to move into work. Empathy and understanding are at the heart of everything we do, and our focus is always on providing the personalised support individuals need to move forward. What inspires us most are the individual learning journeys—each one unique, powerful and truly heartwarming.”

### **How to access EE Hub services**

No appointment is needed, residents can simply drop in.

- Opening hours: 9am to 5pm
- Location: 2nd Floor, Global House (opposite Waitrose exit in the Ashley Centre)
- Phone: 07903 697546
- Email: [epsomandewellhub@surreyllp.org.uk](mailto:epsomandewellhub@surreyllp.org.uk)
- Website: [www.epsomandewellhub.com](http://www.epsomandewellhub.com) - *site is currently being updated*

Residents can also be referred through the local Job Centre Plus or other local charities and voluntary sector organisation.

More information on the EE Hub services can be found here: [Employments, skills and training support | Epsom and Ewell Borough Council](#)

### **About the Epsom & Ewell Hub (EE Hub)**

Initially the service was funded by the DWP and focused on supporting people aged 18-24 into employment. Following marked improvements in local youth unemployment, DWP funding ceased in 2023. From August 2023 the council utilised funding from the UK Prosperity Fund to support a service providing a wider range of employment support to residents of all ages across the borough and the Hub became the Epsom & Ewell Hub.

The service employs a small team of three dedicated staff, alongside other partners who deliver complementary services such as Work Well (helping to get long term sick back into employment) and other training schemes such as Multiply, a mathematical skills programme. [www.epsomandewellhub.com](http://www.epsomandewellhub.com) is currently being updated

### **About Surrey Lifelong Learning Partnership**

Established in 1999, Surrey Lifelong Learning Partnership (SLLP) is a registered charity. Each year they help around 2,000 people return to learn to gain new skills, qualifications and employment. They rely on a mix of income streams, including generating funds through their Bike Project social enterprise and securing grant funding for projects. [About Us - Surrey Lifelong Learning Partnership](#)

### **About NESCOL**

The North East Surrey College Of Technology (NESCOL) is a large further education and higher education college in Epsom and Ewell, Surrey. Attracting learners from the local community, nationally and from overseas, their range of courses include Further Education, Higher Education, professional, leisure, short, full- and part-time courses. [Nescot College Surrey. College of Further and Higher Education | Nescot](#)

Epsom and Ewell Borough Council



Related reports:

[Big employment hub coming to Leatherhead](#)

[Employment Hub opening to all](#)

# Festival of Friendship - Epsom and Ewell - Ukraine

18 June 2026



From 27 January to 1 February, Epsom and Ewell Borough Council is proud to partner with Epsom and Ewell Refugee Network, Epsom Library, and Epsom Picturehouse to host a borough Festival of Friendship - Ukraine.

This week-long celebration will showcase traditional Ukrainian crafts, music, and cultural heritage, while highlighting the friendships formed between Ukrainian nationals who have settled in the borough and the local community that has welcomed them.

The festival offers a vibrant programme of exhibitions, workshops, films, and live performances, all designed to share Ukrainian culture and foster community connections.

Epsom & Ewell Borough Council has worked with partners to curate and run a week of workshops as part of the Festival of Friendship - Ukraine.

## Key Highlights:

- Free Workshops and Exhibitions at Epsom Library, including Ukrainian block printing, paper cutting art, wool crafts, and beading. *Spaces are limited; please arrive early to secure your spot. All materials provided.*
- Film Screenings at Epsom Picturehouse, accompanied by live Ukrainian music performances. *Tickets available via the Epsom Picturehouse website.*
- Children's Activities, including a treasure hunt, face painting, and a special Paddington Bear appearance, at Epsom Library.

Speaking of the upcoming festival, Councillor **Clive Woodbridge**, (RA Ewell Village) Chair of the Community and Wellbeing Community said, "The Festival of Friendship - Ukraine is a heartwarming celebration of culture and community spirit, it brings together Ukrainian nationals and local residents through shared traditions, crafts, music and friendship. Events like this remind us that kindness and mutual understanding are at the heart of a thriving borough—thank you to everyone helping to make this festival possible."

Jo Sherring, Lead from Epsom & Ewell Refugee Network added, "Epsom & Ewell Refugee Network are delighted to partner with Epsom & Ewell Borough Council, Epsom Library and Epsom Picturehouse to create this celebration of our friendship with Ukrainian nationals who live in our community. Since the start of the war in Ukraine in 2022, we have been working with Ukrainian nationals who fled to the UK, helping them access work, housing, schools and community. Their courage, resilience and determination have been an example to us. As we have helped them to navigate life in the UK, we have enjoyed building friendships and learning about their culture and traditions.

The Festival of Friendship is a chance for our Ukrainian friends to share their traditions and culture with the local community with activities happening during the week. We hope you will find time to join us during the week to be part of this celebration."

## Festival Timetable Highlights:

- **Tuesday 27 January:** Opening Celebration at Epsom Library; Ukrainian craft workshops and exhibitions.
- **Thursday 29 January:** Performance by Renaissance Choir and screening of *Rocky Road to Berlin* at Epsom Picturehouse.
- **Sunday 1 February:** Music from Yuliia Komyschan (Ukrainian Bandura) followed by screenings of *Sanatorium* and *Home for Ukraine* at Epsom Picturehouse

Epsom and Ewell Borough Council



Related reports:

From Abramovich's frozen wealth to Epsom's Ashley Centre - support for Ukraine continues

From Ukraine to Epsom: How Music and Kindness Struck the Right Note

Music and dance for Ukraine at Epsom Methodist Church

Epsom MP leads cross-party delegation to Ukraine to examine impact of explosive weapons

Epsom Stands in Solidarity with Ukraine on War's Third Anniversary

"Imagine this house is in Epsom" says our man in Ukraine.

and many more. Search "Ukraine".

---

## Epsom & Ewell Borough Council celebrates its first Young Legends graduates

18 June 2026



Epsom & Ewell Borough Council proudly marked the completion of its first Young Legends programme with a celebration event for participants and their families.

Over the last nine weeks, over 80 children aged 9-11 enjoyed a range of sports and creative activities as part of the council's Health & Wellbeing Strategy, that aims to improve the mental and emotional wellbeing of all residents. The programme supports the strategy by helping children and young people be more active, learn new skills and build connections—key to improving mental and emotional wellbeing.

Children from across the borough took part in Arts & Crafts, Basketball, Girls Rugby, Judo, Musical Theatre and Yoga. The programme was delivered by trusted and skilled coaches from the Body & Brain, Cadgers Basketball Club, Creative Minds, Laines Theatre Arts, Sutton and Epsom Rugby Club, and Westcroft Judo Nork at no cost to the children or their families.

The graduation was a celebration of the programme and included a performance by children who took part in the programme's Musical Theatre sessions, and an arts and crafts activity. The Council's Chief Executive, Jackie King, Councillor Clive Woodbridge and Councillor Bernice Froud joined families and coaches at the event.

Hayley, parent of an Epsom & Ewell Young Legends participant said: "The Young Legends Musical Theatre course gave my son an opportunity to experience performance arts in a way he might not otherwise have had. He discovered a passion for performing and the support and encouragement he received gave him the confidence to overcome any initial fears and showcase an amazing talent we were unaware he had!"

Councillor Clive Woodbridge, Chair of the Community & Wellbeing Committee commented: "Our Epsom & Ewell Young Legends programme has been a fantastic experience! We focused on children aged 9-11 to support their transition to secondary school, which we know can be a particularly challenging time, and we're delighted to have been able to give them the chance to take part in a variety of fun activities—helping to build their confidence as they navigate this key stage.

Parents have shared some wonderful feedback. One discovered their child has a real passion for singing, whilst another said yoga sessions have helped improve their child's emotional wellbeing.

A huge thank you to everyone who made this programme possible: the coaches and practitioners who gave their time, and our dedicated council officers who worked hard to deliver a programme that supports children during this key stage.

We're proud to have supported local children and hope they feel inspired to keep exploring any opportunity that comes their way—long after the programme ends."

### **About Epsom & Ewell Young Legends programme 2025**

More information about the Epsom & Ewell Young Legends programme can be found here: [Epsom & Ewell Young Legends | Epsom and Ewell Borough Council](#)

### **About the EEBC Health and Wellbeing Strategy 2025-2028**

The strategy is designed to support all residents, with particular attention given to children and young people, older adults, individuals whose health is affected by broader social and economic factors and those whose personal circumstances may disproportionately increase their vulnerability to poor health and wellbeing. The strategy also includes specific references to those who are disproportionately impacted by isolation, disability, digital exclusion and people with long-term health conditions. (Public Pack) Agenda Document for Community and Wellbeing Committee, 08/07/2025 19:30

### **About Body & Brain, Epsom**

Body & Brain Epsom Centre offers classes in deep physical, emotional and spiritual healing through meditative movement, deep stretching and shaking exercises. The practice originates from Korea where it has a rich 5,000 year old history of holistic healing and mind-body practices. Devoted to helping individuals better manage and utilize their brains, this beautiful discipline is suitable for people of all ages and levels, and it is the perfect way to increase your physical activity and gain a greater sense of peace. [Body & Brain | EPSOM | Class Schedule](#)

### **About Cadgers Basketball Club**

Cagers Basketball Club is committed to fostering a love for the game and providing competitive basketball for players of all ages and abilities. Their core values include hard work, respect, discipline, and enjoyment. Through teaching correct fundamentals and improving basketball knowledge and skills, we prepare players for the next level, emphasising individual success within a team-oriented framework. [Epsom and Ewell Families » Cagers Basketball Club](#)

### **About Creative Minds**

Founded in November 2012, Creative Minds has been delivering accessible and empowering art sessions for over a decade, earning a reputation as a highly trusted and respected service provider across the UK. Their Creative Minds (CM) Artists bring creativity, expression, and human connection to every session they deliver. We work with a wide variety of venues, including care homes, schools, learning disability services, day centres, and many more, ensuring art is accessible to people of all ages and abilities. [About Us - Creative Minds - Accessible Art Sessions For Everyone!](#)

### **About Laines Theatre Arts**

Since its inception in 1962, Laine Theatre Arts has been dedicated to the fostering of creative talent. Among their alumni are some of the most highly regarded performers, teachers, choreographers, and director-choreographers in the world. The College's outstanding reputation in the performing arts has been built on its unique identity as a training provider, exceptional employment records, and the company values instilled in its students which are noted, time and again by employers. Those familiar with Laine Theatre Arts agree unanimously that it is a unique environment. [Who we are - Laine Theatre Arts](#)

### **About Sutton and Epsom Rugby Club**

Founded in 1881, Sutton & Epsom is one of the oldest active Rugby Clubs in England with a proud and magnificent history. We first played against Saracens as far back as 1883/84, as one of their very early opponents, and in 1901 beat Stade Francais on their home turf.

Today the Club is one of the largest amateur Rugby Clubs in the Country and from its main ground in Rugby Lane, Cheam, remains run by enthusiasts for enthusiasts. They have over 30 teams with 1,200 current and former playing members, plus 1,800 social members. [suttonrugby.co.uk](#)

### **About Westcroft Judo Nork**

Their martial arts store offers an extensive selection of high-quality gear and apparel for practitioners of all levels. With products sourced from reputable brands, they ensure that both beginners and seasoned martial artists find the equipment they need to excel in their training. [Westcroft Judo Nork](#)

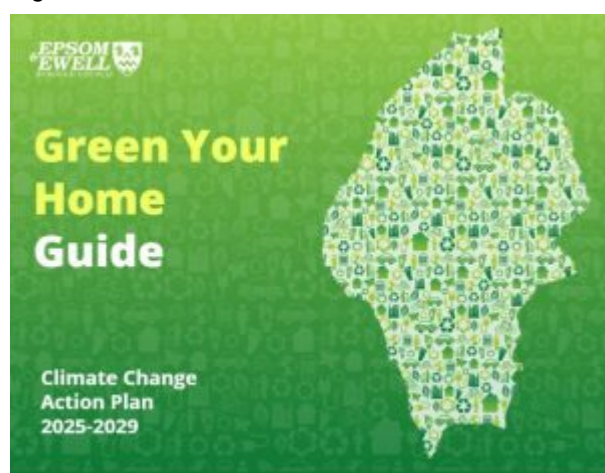
Epsom and Ewell Borough Council




---

## **Epsom & Ewell Borough Council Green Guide**

18 June 2026



[www.epsom-ewell.gov.uk/greenyourhomeguide](http://www.epsom-ewell.gov.uk/greenyourhomeguide)

Epsom & Ewell Borough Council is proud to launch its Green Your Home Guide to help residents take simple, everyday actions to contribute to a healthier environment and help combat climate change. The guide offers practical advice and tips for making small changes that collectively make a big difference.

The initiative empowers individuals and households to take ownership of their environmental impact through easy-to-follow steps. From reducing waste and conserving energy to choosing sustainable transport and supporting biodiversity,

the guide highlights how everyone can play a part.

The Green Your Home Guide is being rolled out as part of Epsom & Ewell Borough Council's Climate Change Action Plan 2025-2029, which has already helped reduce the council's operational emissions by 16% since 2019/2020. This is part of the council's commitment to becoming carbon neutral by 2035.

Councillor Liz Frost, Chair of the Environment Committee, said:

"This guide is about showing people they don't need to make radical changes to their lives to make a difference. Simple, ongoing changes—whether building on existing efforts or starting something new - can have a meaningful, long-term impact. From making homes more energy efficient, to planning wildlife-friendly gardens, and investing in systems that reduce reliance on fossil fuels, every step counts. We want residents to feel confident and motivated to take action, and we hope the guide supports their decision-making along the way."

The Council's Green Your Home Guide is available here - [Green Your Home Guide | Epsom and Ewell Borough Council](#)

More information about the Council's Climate Change Action Plan 2025-2029 can be found here - [Climate Change | Epsom and Ewell Borough Council](#)

#### **About Epsom & Ewell Borough Council's (EEBC) Green Your Home Guide**

The council's Green Your Home Guide explains a number of ways residents can improve their property and garden, helping homes work with nature and reduce their household carbon footprint. Topics include: Insulate to end heat waste; generate green energy with renewable technology; let it drain with permeable driveways; go ahead, go electric; lights out to help nocturnal wildlife; mind the gap to save hedgehogs; give nature a home; save our streams with water butts; turn scraps to soil by composting; turf for earth; wild your garden with diverse, native landscaping; plants for bees; plants for butterflies; plants for birds; plant for the planet: plant new trees and keep existing ones. [Green Your Home Guide | Epsom and Ewell Borough Council](#)

#### **About EEBC's Climate Change Action Plan including progress so far**

In 2020, the council's first Climate Change Action Plan (2020-2024) was developed, setting an ambitious target of becoming carbon neutral by the year 2035. It set out plans to implement a range of measures to reduce the council's own emissions as well as promoting good practice throughout the borough. The council has since adopted its second Climate Change Action Plan 2025-2029. The plan is a living document which will be reviewed and updated over time. [Climate Change | Epsom and Ewell Borough Council](#)

#### **About EEBC Biodiversity Action Plan 2020-2030**

The council's local Biodiversity Action Plan is a long-term plan aimed at protecting, maintaining and, where possible, enhancing biodiversity at a local level, taking into account both local, regional, national and sometimes international priorities. [Epsom and Ewell Borough Council - Biodiversity](#)

[Epsom and Ewell Borough Council](#)



---

## **Epsom and Ewell Borough Council gears up for - you know what**

18 June 2026



It's that time of year again - Christmas is coming to Epsom! Join us on Sunday 23 November for the Christmas lights switch-on in Epsom marketplace, led by the Mayor of Epsom & Ewell and the cast of this year's pantomime at Epsom Playhouse, *Aladdin*. Enjoy a day of festive cheer, with performances from local dance schools and a community choir, family-friendly rides, seasonal stalls, and a special visit from Inka the Polar Bear. The fun starts at 10.30am and the Christmas lights in Epsom marketplace will be switched on at 4.30pm.

Councillor **Clive Woodbridge** (RA Ewell Village), Chair of the Community and Wellbeing Committee at Epsom & Ewell Borough Council, said: "Seeing Epsom lit up for the Christmas season is one of my favourite moments in the community calendar. It's heart-warming to see people from across the borough and beyond come together to enjoy seasonal, festive fun. The day would not be possible without the support of Go Epsom, and local Epsom & Ewell charities and community groups. Thank you to all those who have worked so hard to make it possible for us to hold the event again this year."

The Paparazzi Guys will also join the festivities, providing the perfect opportunity for family Christmas pictures.

Find out about more events taking place in Epsom & Ewell over the festive period, including Christmas activities at Bourne Hall, What's on | Epsom and Ewell Borough Council

### **Free parking days in Epsom & Ewell**

Over the Christmas period, there will be selected days when it will be free to park in Epsom & Ewell Borough Council (EEBC) managed car parks:

- 5 December: Dorset House and Ewell High Street car parks - free from 4pm until 7am on 6 December
- 7 December: EEBC car parks - free all day
- 14 December: EEBC car parks - free all day
- 21 December: EEBC car parks - free all day
- 25 December: EEBC car parks - free all day
- 26 December: Dorset House and Ewell High Street car parks - free all day

Full details about EEBC-managed car parks are available on the council's website. Please note; Hook Road car park is closed on Sundays and bank holidays.

### **Changes to council services**

The Town Hall will be closed on 24, 25, and 26 December 2025 and 1 January 2026, and will close at 3pm on 31 December 2025.

### **Waste and refuse services**

During the Christmas and New Year's weeks, collections must accommodate the public holidays, and at a time when bins are much fuller than usual. Some services may not be available as usual, and your normal collection day may change.

- All planned changes can be found on the council's website: Christmas and New Year collections | Epsom and Ewell Borough Council.
- Christmas week: there will be no refuse collections during Christmas week. Please leave out food and recycling (including glass recycling) only. During Christmas week, collection days may change. Please check the EEBC website for recycling and food bin collection days during Christmas week.
- New Year's week: normal refuse collections start again in New Year's week. However, collection days may change. Please check the EEBC website for collection days during New Year's week.
- Before Christmas, Epsom & Ewell Borough Council will place a label on resident bin handles with collection details for the festive period. If you are an Epsom & Ewell resident, please look out for this reminder about how services will be changing in your road over Christmas and New Year's weeks.

### **Community support services**

Opening times will differ over Christmas and the New Year. Please check the EEBC website for details: Council services over Christmas and the New Year 2025 | Epsom and Ewell Borough Council

### **Christmas tree recycling**

In January, EEBC offer free real Christmas tree recycling for all residents. This is a fortnightly service - check your Christmas bin label for details of when real Christmas tree collections happen in your road. Don't cut up your tree - it's easier to collect whole.

- The Christmas lights switch-on in Epsom marketplace will take place at 4.30pm and there will be local performances from 10.30am. The fun fair and stalls will close at 10pm.
- *Aladdin* will be performed at The Playhouse, Epsom, from Friday 12 December to Sunday 4 January. Book tickets on the website: Aladdin | Epsom Playhouse

Epsom and Ewell Borough Council



Image background credit Andrew Tijou. Licence Details

# Epsom & Ewell Borough Council Remembrance and Armistice Day activities 2025

18 June 2026



Epsom & Ewell Borough Council is proud to announce that Remembrance and Armistice Day memorial services, parades and activities will take place across the borough to honour those who have died in the service of their country and give thanks to those past and present who have served **in** the armed forces. Formal Acts of Remembrance will include the council's annual Garden of Remembrance at Bourne Hall Park on 5 November, Remembrance Day wreath laying and procession on 9 November and an Armistice Day Service on 11 November.

## **Garden of Remembrance: Wednesday 5 November**

On Wednesday 5 November at 10.30am, The Mayor of Epsom & Ewell, the Chief Executive of Epsom & Ewell Borough Council and local schoolchildren will officially open the Garden of Remembrance. Children will perform songs and poems and place poppy tokens to honour and remember all those who have died in the service of their country. **The Garden will be open to the public until the end of November**, giving people the opportunity to visit, and take time to reflect.

## **Remembrance Sunday: 9 November**

At 9.30am the Mayor of Epsom & Ewell will lay two wreaths at the War Memorials in Ashley Road, Epsom. This will be followed by a Remembrance Day procession from the Army Reserve Centre at Welbeck Close and ending at St Mary's Church, Ewell - followed by an Act of Remembrance service, wreath laying and a church service.

## **Armistice Day Service (11/11/11): Tuesday 11 November**

Members of the public are invited to join a ceremony at the Clock Tower at 10.40am in Epsom Market Place. The Mayor, Chief Executive and elected Councillors will join the Royal British Legion, armed forces, veterans and local schools at the service which ends with observation of the nationwide Two Minute Silence at 11am.

Jackie King, Chief Executive, Epsom & Ewell Borough Council, said: "In this moment of remembrance, we pause to honour the service and sacrifice of our Armed Forces. We remember with deep gratitude those who gave their lives in defence of our freedoms, and we honour those who continue to serve with courage and commitment. We will remember them."

## **Other Remembrance Day activities**

Large poppies, kindly donated by the Royal British Legion, are being placed in Epsom High Street, Ewell High Street and Stoneleigh Broadway alongside other poppies placed around the borough.

Events and activities also taking place will include:

- **Bourne Hall Museum: World War I Walk on Saturday 8 November at 10am (free event)**

The public can join Tim Richardson for a walk around Langley Vale First World War Centenary Wood. More information can be found [here](#).

- **Museum Kids club at Bourne Hall: Meet Captain Townsley on Saturday 8 November at 1pm to 2pm (£6.50)**

Children can come along and hear about tales of the war and handle real equipment and uniform. More information can be found [here](#).

For more information on Epsom & Ewell Borough Council's Remembrance Day activities - Remembrance in the borough of Epsom & Ewell | Epsom and Ewell Borough Council

Epsom and Ewell Borough Council



Photo: 2024 Remembrance Event Epsom Market Square, led by then Mayor Cllr Steve Bridger - credit Epsom and Ewell Borough Council

# Epsom's Rainbow Leisure Centre Places new operators

18 June 2026



Epsom & Ewell Borough Council is pleased to confirm that Places Leisure will take over the operation of the Rainbow Leisure Centre in Epsom from 1 October. This follows the Council's announcement in July appointing Places Leisure as the new operator on a 10-year contract, with the option to extend for a further five years.

This marks an exciting new chapter for the Rainbow Leisure Centre with members set to continue benefitting from high-quality leisure, health and wellbeing services.

Places Leisure, part of the PFP Group the UK's leading social enterprise, will be investing its own capital into the leisure centre, upgrading the gym, studios, swimming changing rooms and more.

From 1 October, existing members or anybody looking for a new membership should contact [enquiries@pfpleisure.org](mailto:enquiries@pfpleisure.org). More information can be found on their website - Rainbow Leisure Centre | Places Leisure. Places Leisure has been working closely with Epsom & Ewell Borough Council and the outgoing operator, GLL, to ensure an efficient and safe handover.

Councillor **Clive Woodbridge** (RA Ewell Village) , Chair of the Community & Wellbeing Committee said:

"The wellbeing of our community is at the heart of everything we do, and our Health and Wellbeing Strategy continues to shape how we support residents to live healthier, happier lives. We're proud to be entering a new era at the Rainbow Leisure Centre, one that embraces a holistic approach to health and fitness, and delivers an inclusive Active Communities programme, alongside activities delivered both at the centre and outside in the wider community.

"Places Leisure is providing a platform where everyone in our borough can thrive - opening up opportunities for residents of all ages, including young people, the elderly and those living with a disability or illness, wherever they may be on their wellbeing journey.

"I'd like to thank Places Leisure and Greenwich Leisure Limited for working together to ensure a smooth transition for members. I'd also like to extend our gratitude to Greenwich Leisure Limited for the positive legacy they leave behind, which we are proud to build upon."

**Dan Walker, Business Development Director at Places Leisure, said:** "It is clear that the Rainbow Leisure Centre stands at the heart of the community, providing opportunities for local people of all ages and abilities to enjoy being active and to bring people together. We are delighted to be the new operators of the centre, and we thank GLL for the hard work they have put in during their time as operator. We look forward to a successful partnership with Epsom and Ewell Council, local stakeholders, and of course the colleagues who bring the centre to life.

"A thriving community is a community where everyone is welcome in a truly inclusive way, which is why within the first year of our contract we will invest c£4.7million in a series of projects including a new fitness suite, studios and changing facilities to support community engagement. Our commitment will further boost community activities, inspire people of all ages to lead an active and healthy lifestyle, whilst generating over £5million of social value each year."

Places Leisure website - <https://www.placesleisure.org/>

Places Leisure will also offer a wider range of health and wellbeing-related activities, delivered both inside and outside of the leisure centre, including:

- An Active Communities programme, including exercise referrals for falls prevention, cardiac rehab and weight management; community wellbeing walks, as well as programmes such as 'move through menopause' and Health MOTs, which will support local people in an inclusive way and enable the community to thrive.
- New leisure centre programmes targeted at under 16s and the elderly: including LES Mills exercises classes and Saturday Night Project activities for the under 16s and new EGYM and walking sports to help older adults be more physically active.
- Social value initiatives: such as work placement opportunities including for unemployed and disabled people; leisure industry careers advice and curriculum support; and supporting the local economy by keeping spending within the local supply chain.

Places Leisure will continue to invest in the environmental sustainability of the centre, this will be overseen by an

environmental coordinator.

Places Leisure is a social enterprise which is passionate about ‘creating active places and healthy people’ and improving opportunities for communities to be physically active. It experiences over 30 million visits per annum across the 101 leisure facilities that it operates on behalf of local authorities across the country and supports over 126k children and adults learning to swim each year. <https://www.placesleisure.org/>

Epsom and Ewell Borough Council

Related reports:

Epsom and Ewell will judge change at their leisure

Who will pay for Epsom’s leisure centre “better deal”?

Gold star at the end of the Rainbow

Pot of gold for Rainbow?