

Princess Anne's Epsom visit kept a bit secret

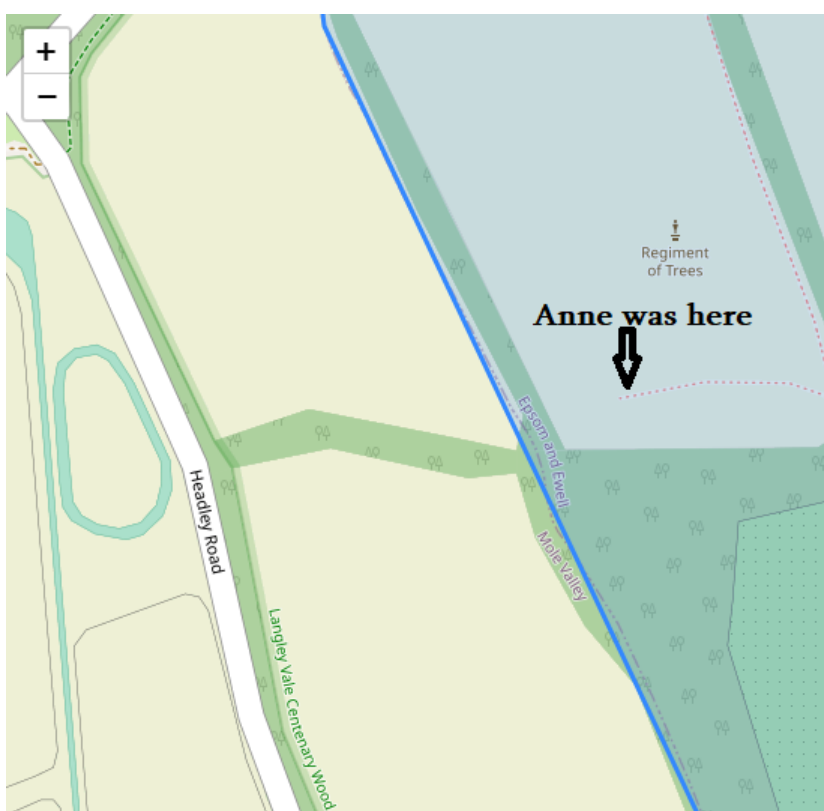
9 October 2022



Epsom and Ewell Times exclusive: 21st June 2022 **HRH The Princess Royal** entered the Borough of Epsom and Ewell. The Court Circular states: Her Royal Highness this afternoon opened the **First World War Centenary Woods**’ “Regiment of Trees”, Langley Vale Wood, Langley Vale Road, Epsom, and was received by Her Majesty’s Lord-Lieutenant of Surrey (**Mr. Michael More-Molyneux**).



The **Epsom and Ewell Times** requested **The Woodland Trust** to explain activity at the Headley Road Car Park entrance that day. The owners of the Centenary Wood fell silent. Our investigation reveals that no “song-and-dance” has been made of the Royal event as the car park cannot open until electric vehicle charging points are working.



Map showing part of the Centenary Wood and where the Princess Royal was on 21st June 2022

As today’s photos show, they are nearly ready but the car park remains closed. Walking is the best way to get to the Wood at the moment. The narrow country roads that surround the wood have no safe places to park.



Car Park closed during normal hours at the Centenary Wood



Line of electric vehicle charging points waiting for power.

The 650 acre Centenary Wood at Langley Vale is the English site of the four for the four nations of the United Kingdom. Epsom and Ewell is very privileged to have this extraordinary amenity at our doorstep.





Ed: This story was ready to break just before Queen Elizabeth II died. Out of respect for the Royal Family we put a hold on publication until after the State Funeral. The car park remains closed as of today.

Council partnerships secure Surrey nature reserve

9 October 2022



Last week saw the official handover of **Tice's Meadow Nature Reserve** to **Surrey County Council**. This much-loved wildlife haven on the outskirts of Farnham saw its long-term future safeguarded when a partnership of six councils came together in December 2021 to purchase the site and protect it as a natural space.

Surrey County Council acquired the site from **Hanson UK** with funding support from Hampshire County Council, Guildford Borough Council, Waverley Borough Council, Rushmoor Borough Council and Farnham Town Council. The 55 hectare (137 acre) former quarry site which is fully restored as a nature reserve now forms part of the Surrey County Council countryside estate.

The official handover was not only an opportunity to celebrate and commemorate the long-term future of Tice's Meadow but also to understand the vital role the **Tice's Meadow Bird Group** play in the conservation of the site and the tireless work of local volunteers.



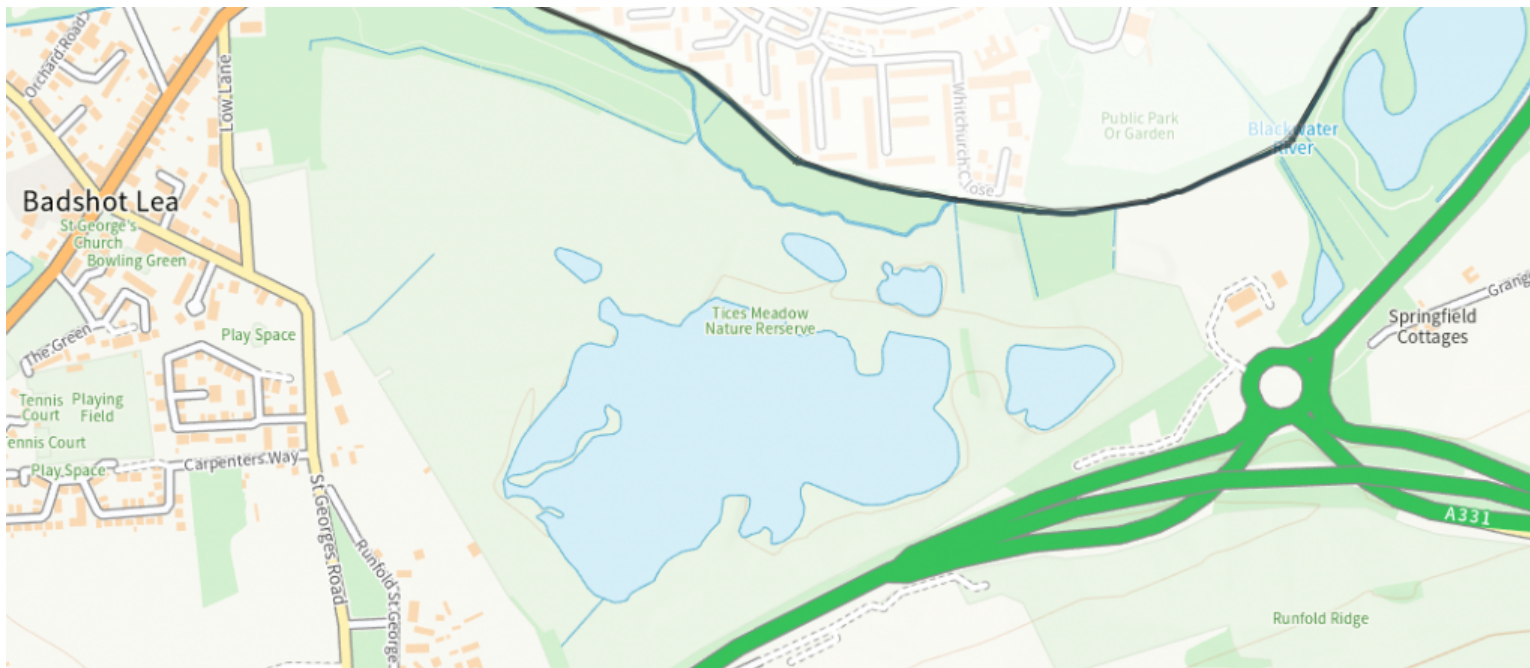
Tim Oliver, Leader of Surrey County Council said: "It is an honour to be a part of the successful partnership Surrey County Council has formed with five other councils, with our shared vision to protect and enhance the natural environment. It is our ambition to work collaboratively with partners to protect our environment and invest in climate change.

"I would like to recognise the valuable work of the Tice's Meadow Bird Group and local volunteers whose dedication ensure this site will continue to be a haven for wildlife, and a wonderful open space for everyone to enjoy recreationally."

Paul Williams, Head of Land and Mineral Resources at Hanson UK, said:

"Hanson UK are committed to conserving and enhancing nature before, during and after mineral extraction. Tice's Meadow – on the site of our former Farnham quarry – is an exemplar of the biodiversity uplift and community benefits that can be achieved through progressive restoration after quarrying has finished. Going forward we know it's in expert hands".

Surrey County Council's Cabinet Member for Environment, **Marisa Heath** and Director of Environment **Carolyn McKenzie** planted a Bird Cherry tree (prunus padus) and unveiled a commemorative plaque to mark the occasion.



Location of Tice Meadow off the Farnham Road (A31) 137 acres.

Tice's Meadow is widely considered one of the best inland sites to watch birds in the southeast of England. As well as a circular 'biodiversity' trail within the site there are also footpath links to Tongham Pools and the Blackwater Valley giving the opportunity for visitors to explore wildlife and the natural environment.

For further information on Tice's Meadow including volunteer opportunities visit their website [Tice's Meadow \(ticesmeadow.org\)](http://ticesmeadow.org).

News from Surrey County Council

Council Pride in Not Uncommon Green Flag

9 October 2022



Epsom and Ewell Borough Council is pleased to have received a Green Flag Award for Epsom Common Local Nature Reserve, one of 2208 UK winners. The award is the international quality mark for parks and green spaces.

This is the 16th year that **Epsom Common Local Nature Reserve** has received this award.

Over the last few years, borough parks and nature reserves have been vital places for people to relax, exercise and meet friends and family safely.

Councillor John Beckett of the Environment and Safe Communities Committee said: "We have some fantastic parks and green spaces in the borough. The news that Epsom Common Local Nature Reserve has achieved the Green Flag Award for the 16th year in a row is a testament to our teams and volunteers whose hard work all year-round ensures it is well maintained. We are also reminding everyone to be fire aware and not to light any BBQs in our green spaces as there is currently such a high risk of fires spreading in this dry spell."

Commenting on the news Epsom Common Local Nature Reserve has met the Green Flag Award standard, **Keep Britain Tidy's Accreditation Manager Paul Todd** said: "I would like to congratulate everyone involved in making Epsom Common Local Nature Reserve worthy of a Green Flag Award.

"Epsom Common Local Nature Reserve is a vital green space for the local community. This award is testament to all the hard work of staff and volunteers, who do so much to ensure that it maintains the high standards demanded by the Green Flag Award."

The Green Flag Award scheme, managed by environmental charity Keep Britain Tidy under licence from the Department for Levelling Up, Housing and Communities, recognises and rewards well-managed parks and green spaces, setting the benchmark standard for the management of green spaces across the United Kingdom and around the world.

A full list of Green Flag Award-winning parks and green spaces is available at <https://www.keepbritaintidy.org/sites/default/files/2022%20GFA%20UK%20winners%20list.pdf>.

The Green Flag Award Scheme (<http://greenflagaward.org/>) is run by the environmental charity Keep Britain Tidy, under licence from the Department for Levelling Up, Housing and Communities, in partnership with Keep Scotland Beautiful, Keep Wales Tidy and Keep Northern Ireland Beautiful.

Keep Britain Tidy is a leading environmental charity. It sets the standard for the management of parks and beaches, inspires people to be litter-free, to waste less and live more sustainably. It runs campaigns and programmes including the Great British Spring Clean, Eco-Schools, Love Parks, Eco-Schools, the Green Flag Award for parks and green spaces and the Blue Flag/ Seaside Awards for beaches. To find out more about Keep Britain Tidy, its campaigns and programmes visit www.keepbritaintidy.org.

Any green space that is freely accessible to the public is eligible to enter for a Green Flag Award. Awards are given on an annual basis and winners must apply each year to renew their Green Flag Award status. A Green Flag Community Award recognises quality sites managed by voluntary and community groups. Green Heritage Site Accreditation is judged on the treatment of the site's historic features and the standard of conservation.

See yesterday's report on **Epsom Common Association**

Flagging Up Epsom Common

Flagging Up Epsom Common

9 October 2022



28th July **David King** and **Cynthea Blunden** of the **Epsom Common Association** (ECA) represented **Epsom & Ewell** at the **Green Flag Award** ceremony in Lambeth Community Hall. This marked the sixteenth successive year that **Epsom Common** has received this award, which describes itself as “the international quality mark for parks and green spaces”.

Much of the Common is designated as a **Site of Special Scientific Interest**. **Natural England** consider all of this land to be in “favourable” condition. Taken together, these points suggest that **Epsom and Ewell Borough Council**, which owns and manages the Common, is successfully balancing the various and sometimes conflicting demands of a recreational open space and a nationally important nature reserve. The new flag will be flying over **Stamford Green** just as soon as the flagpole that blew down last winter is replaced.

At 176 hectare, **Epsom Common** is the largest Local Nature Reserve in Surrey, with habitats including: rough grassland, woodland with veteran oak pollards, remnants of heath, and several ponds. Management is guided by the **Council’s One Hundred Year Plan: 2016 to 2116**, which has been approved by **Natural England**. Clearly woodland containing trees aged five hundred years or more takes some time to reach maturity, but even grassland, consisting of short lived plants, takes many years to fully develop its potential range of plants and animals. So planning for the long term is essential.

The **ECA** was founded by local residents in 1974 to fight a proposed road across the Common. In 1979, in partnership with the Council, the ECA completed the restoration of **Great Pond dam**, recreating the mediaeval pond that had been drained in the Victorian era. Nowadays the ECA has a membership of around five hundred households, and works closely with the Council’s **Countryside Team** and the **Lower Mole Partnership** to protect and improve the Common. After two years with activity limited by the pandemic, the usual programme of events has resumed.

As well as their conservation work, by the end of this year ECA will have: distributed three newsletters; held two public meetings with guest speakers; and arranged several expert led guided walks, looking at birds, butterflies, etc. Every few years they also hold an “**Epsom Common Day**” on Stamford Green, most recently in 2019.



The Summer sun into the clouded sky over the Great Pond brings out the yellow

On Tuesday evenings in summer (until the end of August) the volunteers hand-pull bracken for a couple of hours, to prevent selected areas of heath or grassland being smothered. Their labours are relieved by a break for homemade sparkling elderflower drink and chocolate brownies. During the autumn ECA will hold the three remaining conservation tasks of the year’s programme of eight. Each task runs for two days, usually the third Sunday of the month and the following Monday. The task programme is guided by the One Hundred Year Plan and agreed with the Council’s Countryside Team. The work typically involves removing scrub and small trees to maintain and improve areas of grass and heath; they have also planted a hazel coppice.



Epsom Common under plough

Why is all this management work desirable? Old photographs show that before the **Second World War** much of the Common was open, with small areas of woodland and some old trees, many of which are still alive. Much of the open land was ploughed for agriculture during and immediately after the war. This ceased around 1955, and most of the Common was then essentially left alone. By the 1980s the previously ploughed area had become an almost impenetrable mass of young trees. This uniformity of age, along with the absence of the animals such as: aurochs (the extinct large wild ancestor of domestic cattle), wild boar, beaver, etc., that once shaped woodland and kept it more open, resulted in a habitat that was neither particularly natural nor rich in variety of plants or animals. On the Common, grassland and lowland heath were probably manmade habitats, arising from a combination of tree felling and grazing, but they support species not found in woodland. By careful management a mixture of grassland, heath, ponds and varied woodland, can be created and maintained, leading to a much greater range of plants and animals.

During the summer, three areas of the Common are grazed by cattle, this year a total of fourteen animals. The cattle graze the grass and heathland in a way that cannot be replicated by mowing. In recent years the **Great Pasture** has been extended to include an area of woodland, a habitat in which the cattle’s ancestors would have been at home. Today’s **Belted Galloways** and **Dexters** also appear happy to forage amongst the trees, particularly during hot weather. For their

health the cattle must be checked every day, as are the fence lines and water troughs. Each week the ECA provides four of the daily checks; without their contribution it is unlikely that grazing could be continued.

Finally, ECA make excellent hardwood charcoal from logs harvested during conservation work. Last year, thanks to a grant from the **Council's Community Infrastructure Levy**, they were able to take delivery of a modern charcoal retort. Compared with the conventional ring kilns used previously, the retort greatly reduces the smoke and increases the yield. The charcoal sales help finance ECA's activities. Volunteers are not paid, but of course they do have to pay for tools, fuel, insurance, etc.

If you would like to find out more about ECA's efforts to keep the Common special, please visit their website: epsomcommon.org.uk or our Facebook page: www.facebook.com/EpsomCommonAssociation

They welcome new members, whether you wish to take part in conservation tasks or simply support their efforts through your membership.

See also press release from Epsom and Ewell Borough Council issued 12th August

Council Pride in Not Uncommon Green Flag

Verging on reason?

9 October 2022



Surrey County Council is to take back control of verges and on-street parking enforcement from **Epsom and Ewell Borough Council** and all other County districts. In a bid to streamline services, ensure consistency and improve biodiversity SCC will do the lot.

Surrey County Council is responsible for highway verge cutting and weed control, as well as on-street parking enforcement. It currently has agreements in place with eight of the eleven district and borough councils, including **Epsom and Ewell**, to manage the verges on the county council's behalf, and all on-street parking enforcement is managed by the districts and boroughs.

From April 2023 the county council will manage both of these county-wide to ensure consistent approaches across Surrey.

Matt Furniss, Cabinet Member for Transport, Infrastructure and Economy, said: *"We appreciate the hard work our district and borough teams have undertaken on our behalf. However, as we continue on our mission for a greener future, now is the right time to take verge cutting and weed control back in-house to enable us to focus our efforts on improving biodiversity consistently across the county. We will continue to regularly cut junctions and sightlines so it's safe for residents."*

"We also know how important parking is for residents and by managing on-street parking across the county, we can ensure it's fair and consistent. We'll also take a look at options to improve our systems and make processes as easy as possible for all Surrey residents."

The county council aims to promote biodiversity by promoting wildflowering on appropriate highway verges and will continue to trial more sustainable approaches. Managing parking across the county will ensure a good service is offered throughout the county and offer good value for residents.

Nigel Collin, Chair of **Surrey's Wildflowering Project** said *"I welcome Surrey's commitment to promote biodiversity by promoting wildflowering on appropriate highway verges. The County wide management of verge cutting from next April is also welcomed since this will ensure a uniform approach across all of the County's Districts and Boroughs."*

This was echoed by SWP volunteer **Kim Spickett** who responded *"As a borough, I think we have a good starting point – so many of us enjoy our wildlife! Flowering verges, along with our open spaces, parks and gardens, will be a win for biodiversity. Native plants come in all shapes, sizes and heights – there are examples to beautify every situation. White Clover and her relatives supply the grass with the nitrogen it needs, giving the verge the ability to stay green during dry spells. It looks pretty and suits verges that have to be kept short – and it feeds our insects!"* Kim demonstrates the contribution verges can make to biodiversity with this photograph:



The Brown Hairstreak butterfly next to a busy local "B" road

Residents Association County and Epsom and Ewell Borough Councillor Eber Kington expressed his doubts about the plan: *"I have real concerns about these proposals. Given SCC's track record on service delivery, ensuring "consistent approaches across Surrey" will very likely mean a poorer service for residents and a levelling down rather than an improvement in the quality of service. For example, SCC currently funds just four verge cuts a season across Surrey but the Borough Council, which undertakes the verge maintenance work in Epsom and Ewell, funds between 2 and 4 additional cuts. Unless SCC continues with this current level of service, the grass verges in our residential streets will see a fall in standards and complaints from residents will rise."*

Reducing the established Borough Council service is a pattern of behaviour already established when Surrey Highways took back the maintenance of highway trees from the Borough Council. SCC will now only provide for the maintenance of a tree if it is diseased, dying, or dead. So pruning, clearing telephone wires and other maintenance work is no longer undertaken."

I also have a concern about SCC taking back on-street parking enforcement. In Epsom and Ewell, we have resisted pressure to introduced parking meters across the borough. My concern is that SCC's "fair and consistent approach across Surrey" will be used to populate our streets with these parking charging devices as a way of funding SCC's services and taking more from our residents."

Cllr **Julie Morris** (LibDem College Ward Epsom) responded to the wider plan: *"This sounds like another power grab , furthering SCC's mission to abolish district and borough councils entirely. Having the county council deal with on street parking enforcement will not work. Centralisation means there is no local knowledge. Our wardens respond really well to complaints, hot spots and are quick to resolve problems when these are reported. As for wildflower planting, I'm happy to reserve judgement on that one as we've tried for a few years to get EEBC to leave verges uncut and introduce a wildflower bloom+cut regime and they've done nothing. "*

Related stories

A Greener Future in Partial Sight As Verges To Be Left Unmown

“Garden of Eden” coming to West Ewell as Wetlands Plan is approved. Will this stop pollution?

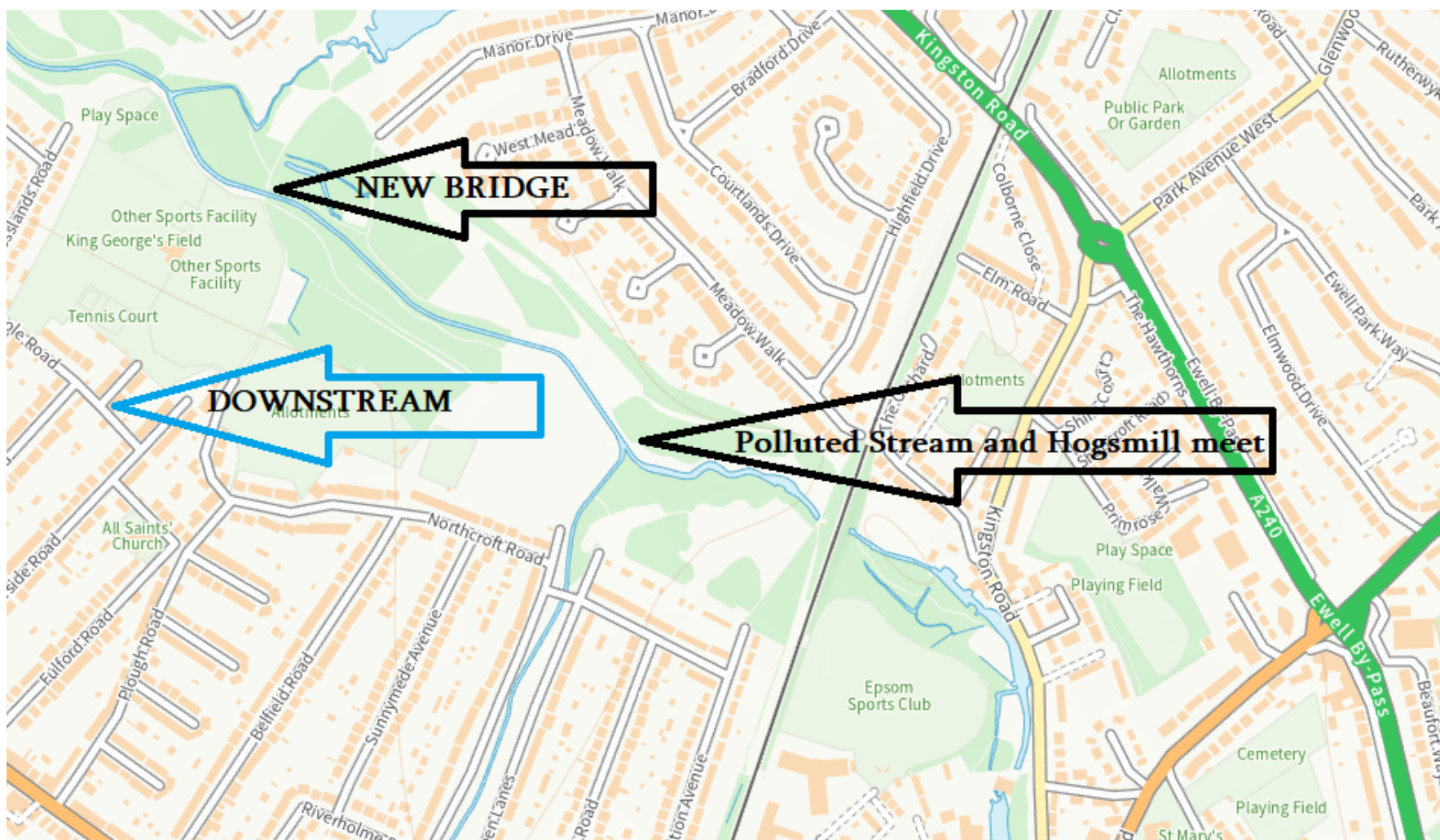
9 October 2022



A plan to mitigate some of the environmental impacts of sewage on the **Hogsmill River, in West Ewell**, was finally approved by **Epsom and Ewell Borough Council** Thursday 21st July.

The scheme submitted by local charity **South East Rivers Trust** in May 2021, was granted by councillors after a 30-minute meeting of the **Planning Committee**, chaired by Cllr. **Humphrey Reynolds** (RA Ewell Ward). Cllr. **Steven McCormick** (RA Woodcote Ward) abstained from the vote.

The project will divert the **Green Lanes Stream** approximately 50m upstream from its current confluence with the Hogsmill River. The Stream will flow along a new winding channel through **Chamber Mead meadow** within the **Hogsmill Local Nature Reserve**, passing through a constructed sediment trap and wetlands, before entering back into the Hogsmill River approximately 200 metres further downstream from its original confluence. Up to 1,000 m2 of wetlands habitat will be created and the flow of the new channel will attenuate the sewage brought to the watercourse from road runoff, misconnections, and overflows from Epsom Storm Tanks.



Map view of area where wetland will be developed

“I hope it will become like the Garden of Eden,” said Cllr. **David Gulland** (Liberal Democrat College Ward) during the meeting.

According to the application, sediment and contaminants would be trapped, and a level of treatment would be provided to the polluted water in three different forms. A biological treatment would naturally occur with the uptake of aquatic plants and metabolism; a chemical treatment would act on pollutants with the employment of dissolved nutrients, such as nitrate and phosphate; and a final treatment would be carried out physically, harnessing the decrease of flow velocities caused by the sediment trap, to settle sediments and pollutants via gravity.



View toward Chamber Mead open space from the end of Green Lane

In addition to the creation of the new channel, a 12-metre bridge was proposed to let pedestrians, including wheelchair users and cyclists, reach the stepping stones from the south of Chamber Mead.

“It’s a very welcome improvement to reducing and mitigating the impact of pollutants entering the chalk stream river and the discharges of sewage,” said **Cllr. Kate Chinn** (Labour Court Ward).

Pollution has long been a scourge for a river that is internationally recognised as one of the only 200 chalk streams on Earth, and its chemical concentrations even led the **Environment Agency** to issue a ‘fail’ status in 2017. Warning signs have been put up advising people not to attend the area.

After the application was submitted, 527 letters of notification were sent to neighbouring properties to advertise the plan. As of July 2022, more than 35 letters of support have been received. Nevertheless, one of the recipients manifested their objection, as pollution “should be addressed at source.”

Despite the worthy purposes of the plan and the actual benefits this could achieve, failures at Epsom and Manor Drive Storm Tanks, Hogsmill A Wastewater and Cso At St. James’s Road sewer storms – all managed by the private utility company **Thames Water** – appear to be the real problem.

In 2021, a total of 159 hours of untreated sewage contaminated the river across 47 incidents, according to data published by The Rivers Trust.

“We support the scheme to reduce the impact of some of the pollution, however it will only do this on a fraction of the pollution coming into the channel,” said **Mark Todd**, local entrepreneur and member of Epsom and Ewell Labour Party, whose petition asking the company to stop the pollution has recently topped a thousand signatures. “Thames Water must, must, must stop overflowing so much sewage deliberately into the streams for wildlife to survive and for the streams to be safe for kids.”

In a letter sent to the company and reviewed by Epsom and Ewell Times, the signatories of the petition demand that Thames Water upgrade their “inadequate infrastructure,” as “local residents and community groups are very concerned about what is going on and are very disappointed.”

Along with coliforms, raw sewage discharge from the sewage network is seen as one of the two “major issues to tackle,” according to a joint opinion piece from Professor Chris Whitty, Chief Medical Officer for England, Jonson Cox, Ofwat chair, and Emma Howard Boyd, Environment Agency chair, released in June 2022. “The principal public health responsibility for ensuring human faeces and viable human faecal bacteria do not get into waterways people might use recreationally, rest squarely with the water companies and their directors.”

A spokesperson from Thames Water, although acknowledging the risks of pollution, seemed to disagree. “We certainly can’t do it on our own,” they said.

A Greener Future in Partial Sight As Verges To Be Left Unmown

9 October 2022



Roadside verges in Surrey will be cut less frequently to foster biodiversity, according to Highway Authority, Surrey County Council. In a move to ease the pressure on native nature from human activity, around 700 species of wildflower will be left unmown, and plants and wildlife in the area restored. “It’s time to redefine our ideas about what well-managed public spaces look like,” said **Andrew Jamieson**, Projects Director at **Surrey Wildlife Trust**. “It’s an essential part of our joint plan to restore and support Surrey’s plants and wildlife and take a first step towards a greener future for the neighbourhood.”

Feature photo: *credit Jon Hawkins – Surrey Hills Photography*

The decision builds on the **Climate Change Delivery Plan** published in 2020 to respond to Surrey County Council’s climate emergency declaration and set a target for Surrey to be net zero by the half of the century. Supporting and increasing biodiversity will contribute to become a carbon free county by 2050, said **Matt Furniss**, Conservative Cabinet Minister for Transport, Infrastructure and Economy, in the press release. “Vegetation has fantastic benefits for both Surrey’s wildflowers and wildlife.”

According to research, over 97 per cent of UK wildflower meadows, equal to 3 million hectares (7.5 million acres), have been lost since the 1930s and replaced with monocultures with a lower ability to store carbon. Emissions relating to the consumption of goods and services by Surrey residents and businesses are estimated to be more than twice greater than those measured as part of the net zero targets.

According to the Climate Change Delivery Plan, land can naturally reduce the county’s carbon emissions by 3%. Not surprisingly, the strategy includes the **Growing Back Greener programme**, through the facilitation of planting, the reduction of flooding and the support to native biodiversity, as one of the main goals to achieve. Surrey itself aims at growing 1.2 million trees over the next decade.

Although nature and its safeguard are known to lead to multiple accomplishments, mixed concerns among residents were stirred after the measure was announced. “Many people fear a tick population explosion because of ‘wild’ grassland: where you have wild mammals, you have ticks,” said **Kim Spickett** of **Epsom and Ewell based Surrey Wildflowering Project**, a community-led initiative to promote and celebrate the borough’s diverse environments. “But ticks frequent parks and gardens too, not just countryside. Our nature reserves have safe paths that you can use to walk safely with dogs and children.”



Roadside verges, that tend to thrive on the sides of highways, might also cause safety issues if left untended as sightlines might be affected. “A sightline for traffic can be cut and the rest left to bloom,” said Spickett. “That said, wiping out or “scalping” makes no sense. Mowing blades can have the height adjusted to “top” the grass and leave shorter flowers intact.” Echoing Spickett, SCC acknowledged the risk to sightlines and promised to ensure safety while pushing to keep the verges intact. “Highway safety remains paramount, and sightlines will be kept clear,” said Furniss. “Any issues with vegetation impairing visibility can be reported via our website.”

Advice on ticks and tick bites can be found on the NHS website.

Water restraint urged as dry weather continues

9 October 2022

UK HEATWAVE: THAMES WATER URGES HOUSEHOLDS TO CONTROL THEIR WATER USAGE.

- *Thames Water is urging residents to control their water usage and limit consumption around the home.*
- *Households are being advised to take shorter showers and limit use of the garden hose in a bid to reduce water usage.*

With temperatures set to rise to record levels this week, Thames Water is urging residents to control their water usage and limit consumption around the home where possible.

Prolonged spells of hot weather increase the demand for water, putting a strain on the network and accelerating the draw on rivers, underground aquifers, and water stored in reservoirs.

Thames Water is offering advice to households on how to limit their water usage and help to prevent any future shortages. This includes simple routine changes such as taking shorter showers, reducing use of the garden hose and turning taps off when brushing your teeth.

Research released today by Thames Water and YouGov reveals that rising temperatures and its effect on the supply of water is an issue causing concern among adults in England. Over three quarters (76%) think it’s possible parts of England will experience water shortages in the next 20 to 30 years.

It’s changing the way they think about water too; more than a third (38%) say they would be motivated to use less water to protect rivers and the environment, while almost as many would cut back to make sure there’s enough water available for future generations (35%) or to help avoid a drought (31%).

Andrew Tucker, Water Demand Reduction Manager at Thames Water, said: “During spells of hot weather, water usage can often rocket, with hoses and sprinklers watering gardens and paddling pools filled. That makes it even more important to be mindful of water usage to ensure there’s enough to go around for everyone.”

“While we’re not currently expecting to introduce restrictions on water use this summer, it’s important that households remain responsible with their usage and help us to limit the pressure on our resources.”

- **Take shorter showers.** On average, a shower uses around 10 litres of water a minute. That means a 10-minute shower can use 100 litres of water. If a family of four reduced their shower time by just one minute, they could save up to £45 on metered water bills and a further £52 on energy bills every year.
- **Swap your hose for a watering can.** You can keep your plants happy and still save water by swapping the garden hose or sprinkler for a watering can. A sprinkler can use as much water in half an hour as the average family of four uses in a whole day. Using a watering can in your garden could save up to 4,050 litres a year, that’s equivalent to more than 50 full bathtubs.
- **Don’t water when the sun’s out.** Avoid watering plants when the sun’s out and temperatures are high to help minimise the amount of water evaporating. Water early in the morning if you can as evening watering encourages the slugs and snails to come out at night.
- **Turn off the taps while you brush your teeth.** A running tap uses on average 6-8 litres of water a minute. That’s over 14 pints straight down the drain – so an easy change to make a big difference is turning off the taps while brushing.
- **Fix leaky loos and dripping taps.** Leaky loos are usually caused by a faulty flush valve or fill valve inside your cistern tank. A leaky loo can waste an average of around 400 litres of water a day. That’s equal to five full bathtubs or around £350 a year.
- **Go the full load.** Wait until you have a full load before running the dishwasher or washing machine. This will not only save on the amount of water you use, but it’ll lower your energy use – helping you reduce your bills.

Households can also find a free water saving calculator on the Thames Water website where they can work out how much water and energy they are using and receive tailored advice on how to save.

Not in my back-garden centre!

9 October 2022



John Dipre of the Dipre family-run Marsden Nurseries Ltd, owners of the Epsom bordering Ashted Park Garden Centre in Pleasure Pit Road, has applied to Mole Valley District Council to demolish this popular garden centre and restaurant and build on the site 26 two to four-bedroom houses.

Neighbours are up in arms and objections are mounting before the consultation deadline of 25th April passes. Objectors point out that recently the Council had removed the site from an area for potential development. It is said to occupy a sensitive area of the Green Belt as it separates Epsom from Ashted. The roads around are narrow and bendy and already hazardous. Public transport is threadbare. The Langley Vale E5 bus every two to three hours that crosses Epsom is the only one apart from a weekday daily school service.

The Applicant, John Dipre, has been involved as Director of no less than 120 registered companies, most of which have been in homes, investments and property. He claims that the proposed development will be an improvement for nature as presently most of the land is tarmac and his plans will see trees, hedges and grassy areas grow.

No affordable housing is planned for the development.

The full plans can be seen via molevalley.gov.uk/planningsearch and enter MO/2022/0474

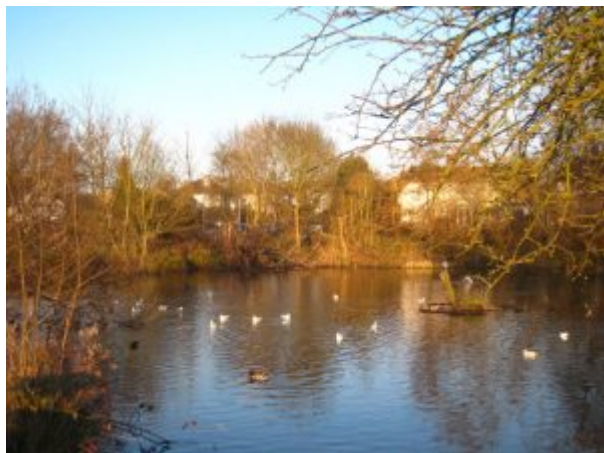
Issues relating to development, housing, planning, brownfield sites and affordable housing are addressed in an opinion piece exclusively for the Epsom and Ewell Times by Tim Murphy you can read [HERE](#).

If you are affected by a significant planning application email us or use the contact form and we will consider reporting on it.

Want more from us? Read more Council News [here](#).

Storm Eunice - Can the Epsom Common Ducks handle it?

9 October 2022



Storm Eunice is battering the nation, delaying flights, cancelling trains and causing general tutting and annoyance from all prospective travellers, but there are unsung victims of these gale-force winds, the poor ducks who reside in the ponds of Epsom Common, will they be able to cope with the 90mph winds? If gazebos and golden apple trees alike can't handle the winds, will our little winged friends manage?