

Top teams level at the end

28 November 2022



Epsom & Ewell 1-1 Shoreham Southern Combination League - Division One Saturday 26th November 2022.

Two very late goals after 85 minutes of attritional combat ensured that the best two teams in the League couldn't be separated on Saturday. However, as a spectacle, this match won't live long in the memory, with exception of a deserved 98th minute equaliser from our boys, which may turn out to be an extremely important goal in the grand scheme of things.

Shoreham were the visitors to Fetcham Grove and although they kicked off in third place in the table, they represented the largest threat to our title hopes, sitting six points behind us but with two games and boasting an unbeaten record. They also held a 100% away record in the League.

We made just the one enforced change from our win at Wick as Nick Wilson had to sit this one out after accumulating five bookings; he was replaced in the starting eleven by Gavin Quintyne, and that gap on the bench was filled by Tre Trowers. We made a bright start and had a half chance in the first thirty seconds when Johnny "Sonic" Akoto got down the right wing, but his pull back was skied by Athan Smith-Joseph.

We had another opportunity after Smith-Joseph was fouled around 25 yards out and Ryan Smith's set piece cleared the bar by around a foot, while in response Shoreham also had a couple of free kicks of their own, but without major threat. In reality this was to be a match with a number of half-chances, but very few really good ones.

There was no shortage of fight from both teams as the players knew that this was an extremely pivotal encounter. Neither team were getting very close to goal and we had another Smith free kick that just cleared the bar before Jaevon Dyer's ball in from the right was just ahead of Jamie Byatt. Brad Peters headed a Smith corner goalwards, but the danger was cleared, while at the other end Akoto headed a Shoreham effort on target clear from the goal line. As the match meandered towards half time Dyer tried his luck from twenty-five yards and Lewis Sheppherd in the Shoreham goal just about kept the ball out, while at the other end a misdirected header from Zach Powell was met by a wayward shot from the visitors from just outside the box.

The second half continued in a similar vein but with arguably even less chances. The game was a little niggly at times and the play was often stopped. We did have a very good chance in the 48th minute after Josh Owen won the ball and found Byatt who sent a great pass over to Smith-Joseph, who then cut back in, beat his man and saw his shot beaten away by Sheppherd, with the loose ball being fired at goal from Byatt but blocked by a defender.

Kane Charles had to punch away an Alex Fairs free kick from wide out and Harry Heath and Danny Jones picked up yellow cards for cynical fouls as the game degenerated. Charles then required treatment after appearing to get another knock that looked like it was also fairly deliberate before Quintyne picked up a yellow of his own and the game looked to be heading towards an uninspiring goalless draw. Until the 88th minute that is, when a visiting player got beyond Akoto who chased him but then brought him down needlessly for a penalty. Jones stepped up for the penalty, but Charles produced a good save, only for Marcus Richmond to nip in and fire the loose ball into the net from close range before our defenders could clear the danger.

This wasn't in the script! With just two minutes of normal time remaining we were in danger of losing our second home match in a row, but responded well. and got the ball forward a bit more frequently as time began to run out. As Shoreham players suddenly started to require treatment for injuries we tried to push them back. However, a Dyer free kick that went over the bar was all we could show for it as the clock ticked deep into injury time. Fortunately redemption was coming and it arrived in the 98th minute, Owen chased a ball into the far corner, retrieving it before delivering a great cross with his left foot. The ball was flicked on by one of our substitutes Ben Bauchop and was met at the far post by the outstretched leg of Smith-Joseph who found the net from about five yards out to secure the equaliser.

The match finally concluded after almost nine minutes of injury time and with the Shoreham bench saying that "this wasn't the World Cup" but looking back, there was quite a bit of injury time required in this half. Smith had required treatment before limping off, while injuries to Charles, Dyer and Smith-Joseph also took a while out of the forty-five, so maybe the extra time was justified in this case, although it did seem a tad generous.

Was it a fair result though? Absolutely! To lose this match would have been extremely harsh on our boys who were at least as good as our opponents. However, it must be said that we were not great and have played far better this season. Of course, the importance of the occasion almost ensured that this would be a tight encounter with neither team wanting to give anything away. It was just a shame that the match wasn't very well advertised by the club who seem to think that one tweet, repeated a few times in the week is sufficient. It clearly isn't, as an attendance of 94 counted by two different sources (inclusive of a few from Shoreham) testifies, although the club advertised it as 107. Maybe they were all inside the club house watching the World Cup instead!

This contest marked the halfway point of our League season and we have now completed both of our matches against Shoreham, failing to win either. However, we have a better looking run in and have nine of our remaining sixteen matches

at home. Under the circumstances, I believe this point was better for us than for Shoreham, but only time will tell if that is the case. One thing is for certain in my opinion, which is that these are the best two clubs in the division and the title will go to one of them. However, it wouldn't surprise me if this battle goes all the way to the final day and this late equaliser from an otherwise forgettable match, may prove to be one of the most important we will score all season.

Epsom & Ewell: Kane Charles, Johnny "Sonic" Akoto, Zach Powell, Ryan 'Butch' Smith, Brad Peters (c), Gideon Acheampong, Athan Smith-Joseph, Gavin Quintyne, Jamie Byatt, Josh Owen, Jaevon Dyer

Subs: Ben Bauchop for Smith (63), Josh Alder for Byatt (71) Kevin Moreno-Gomez for Powell (82)

Mighty Maids Run Riot

28 November 2022



MAIDENHEAD 61 - SUTTON & EPSOM 24 - Saturday 26th November. Maidenhead started this season with four extremely impressive wins as they surged to the top of the table by the end of September. That was followed by five defeats before they returned to winning ways in the last round against Bournemouth. In stark contrast S&E have only one win and multiple close defeats in the opening ten encounters. The Berkshire club ran in nine tries in a thumping 61-24 triumph that reaffirmed the league standings of the two clubs.

On a chill and overcast afternoon Maidenhead kicked off. It only took a couple of minutes for the hosts to open their account. Pouncing on a sliced clearance they besieged the Sutton & Epsom line before hooker Dan Hostetler forced his way over the line. Greg Smith added the extras. Hardly had anyone had time to digest the early score when Harry Wells made a surging break from the restart and gifted a try to his centre partner Niall Crosley. Greg Smith added the conversion for 14-0. Sutton's pain in the first five minutes increased as they saw fly half Gareth O'Brien departing with an injured ankle. Jamie See went to 10 and Angus Findlay came off the bench for his league debut.

Maidenhead gave the visitors no time to settle and crossed the whitewash for their third try from Number 8 Will Macaulay. Greg Smith added two more points to his tally for 21-0 after only ten pulsating minutes. Sutton hit back as Seb Priest's sublime grubber into the corner set up a 5-metre line out. The pack ushered Matt Harwood over the line from his preferred distance. Sam Hurley added the conversion and the lead was cut to 21-7.

The second quarter may not have provided as many points but was still full of action. S&E lost hooker Alex Mount to injury on the half hour to be replaced by Jack Howes. Both teams squandered chances to add to their score as the first period entered time added on.

The Braywick Park team reasserted their authority with two more tries. Firstly, good carries by the pack culminated in a deft pass from a prop that found winger Scott Prince in space to finish it off. Not to be upstaged fellow winger Alex Turton scored a wonderful solo score from 60 metres to make it five tries. The metronomic Greg Smith bisected the uprights on both occasions as the first half concluded with Maidenhead comfortably placed at 25-7.

The second period began with a brutal reminder of who was in charge. A strong carry by flanker Ed Atkins set up Niall Crosley for a stunning break deep into the Sutton & Epsom half before setting up fullback Jamie Maddern for the try. Greg Smith chipped over the conversion for 42-7. Then Harry Wells was given a yellow card for a breakdown infringement. Sutton & Epsom certainly made their numerical advantage pay as they quickly scored from another disciplined effort from the pack from a 5-metre line out with captain Chris Farrell taking the plaudits. The conversion went awry as S&E trailed 12-42. The Black & Whites were the next to touch down courtesy of a remarkable line out that rumbled 40 metres down the paddock. The ball was finally released and Austin Bell put Seb Priest in at the corner. Sam Hurley converted from the flank for 19-42.

Restored to their full compliment the Berkshire team regained their scoring mojo as a dummy from James Maddern flummoxed the Surrey defences and flanker Jack Norris finished off with a 20-metre burst to the line. Greg Smith perfect afternoon with the boot ended with his only missed conversion with Maidenhead 47-19 to the good. A couple of minutes later it was more stunning play from the brilliant Berkshire backs as replacement Charlie Scott delayed his pass to perfection to put in the returning Harry Wells. Normal service resumed from the boot of Greg Smith to extend the lead to 54-19. Scott Prince raced in for his second and Maidenhead's ninth, and final, try. Greg Smith was on target again to record his sixteenth point as he stretched the lead to 61-19.

The Rugby Lane men gained some small consolation on a chastening afternoon when they secured a bonus point when they scored a fourth try. Once more it was the forwards, and again a catch and drive from a line out. On this occasion it was replacement Rob Hegarty burrowing his way to glory. Maidenhead's Charlie Scott became the latest victim of the harsh sentence meted out to anyone found guilty of knocking on an attempted interception. With Maidenhead reduced to 14 and Sutton already with the bonus point the game petered out in the last ten minutes in stark contrast to the seismic opening exchanges. The Magenta men celebrated their well-deserved victory as the final whistle blew to conclude proceedings.

The host's victory was based on the power, pace and precision of their first class back division. Having gained the initiative with three early strikes Maidenhead never looked likely to be overhauled. The Sutton cause was not helped by key early injuries to not only their fly half but also their hooker. The home pack had a much harder afternoon. Indeed, the Black & Whites were entirely indebted to their forwards for their bonus point with four tries of similar style based around their improving line out.

The homeward stretch of the league season starts next Saturday, 3rd December, with the first of the reverse fixtures against Banbury. Back in September Sutton were forced to play at the neutral venue of Cobham RFC and the Oxfordshire club narrowly won a hard fought encounter by 26-22. If S&E felt downcast on Saturday when the referee brought the game to a close one can only imagine the emotions in the Banbury dressing room as they were thrashed 102-22 by league leaders Wimbledon. Both sides will be keen for redemption when they meet at Bodicote Park as Sutton & Epsom visit another new league venue this campaign.

Sutton & Epsom

Michael Davies, Sam Hurley, Freddie Bunting, Jamie See, Sebastian Priest, Gareth O'Brien, Austin Bell, Tom Boaden, Alex Mount, Will Lloyd, Josh Glanville, Matt Harwood, Ben Tame, Chris Farrell © & James Caddy.

Replacements (all used): Jack Howes, Rob Hegarty & Angus Findlay.

Maidenhead

Jamie Maddern, Scott Prince, Harry Wells, Niall Crossley, Alex Turton, Greg Smith, Archie Dunnill, Elio Mandozzi, Dan Hostetler, Elliott Beattie, Phillip Wells, Brook Harvey-Smith, Ed Atkins, Jack Norris & Will Macaulay.

Replacements: Mike Guida, Levi Meek and Charlie Scott.

Epsom and Ewell last in Local Planning

28 November 2022



Epsom and Ewell Borough Council (EEBC) has approved a delayed timeframe for the development of its new **Local Plan**, putting it behind both government targets and other Surrey councils, amid debate over greenbelt development.

On 21st November, EEBC's Planning Policy and Licensing Committee unanimously approved a **Local Development Scheme** (LDS), which sets out a timeframe for the development of its new Local Plan that would see the planning authority miss a government target by more than a year. The Local Plan will set out planning policies and sites that may be developed in the borough up until 2040.

The LDS supersedes the version approved by the council in April, and delays the first stage in the development of the Local Plan by three months. It forecasts that the Local Plan will be adopted in Spring 2025. In an agenda paper, the council's interim Chief Executive **Jackie King** pointed out that "the government will want to see progression against their target date of all Local Planning authorities having an up-to-date Local Plan by the end of 2023."

In 2017, the Government made it a legal requirement for Local Plans to be updated, and if necessary updated, every five years. Epsom's current planning framework consists of four documents dated between 2007 and 2015. The council has said that the national period of mourning following the death of Queen Elizabeth II caused delays because councillor briefings were rescheduled. Ms King also said that there were delays "to allow further member briefing sessions to be undertaken to enable members to fully engage with and help shape the Local Plan."

At the committee meeting, Councillor **Julie Morris** (Liberal Democrats, College Ward) said: "The period of mourning was three weeks, and yet we have a three-month delay." She added that it was "regrettable" that the committee's chair, Councillor **Steven McCormick** (Residents Association, Woodcote Ward), had "put a lot of effort in trying to get councillors to attend briefing sessions" but that "at least one has had to be re-run because of lack of attendance." She continued: "There is a communication failure. Councillors outside the committee do not realise the importance of the document, give it the deference it deserves, or give their views."

The new LDS means that EEBC will be the last local council in Surrey to adopt a new Local Plan, with the exception of Woking Borough Council and Banstead and Reigate Borough Council, who said their plans did not need updating.

Surrey district/borough council	Pre-Publication Stage - Consultation. (Regulation 18)	Publication of Submission Draft Local Plan (Regulation 19)	Submission and Examination of Local Plan (Regulation 22)	Adoption
Elmbridge		Ran from June-July 2022	Scheduled for Winter 2022	Scheduled for Summer 2023
Epsom	Scheduled for Feb-March 2023	Scheduled for Feb-March 2024	Scheduled for June 2024	Scheduled for Spring 2025
Guildford			Part 2 submitted June 2022	Part 1 adopted April 2019. Part 2 scheduled for March 2023.
Mole Valley			Submitted February 2022	Scheduled for Spring 2023.
Runnymede				Adopted July 2020
Spelthorne		Ran from June-Sep 2022	Scheduled for Nov 2022	Scheduled for Sep 2023
Surrey Heath	Ran from March-May 2022	Scheduled for Jan-Feb 2023	Scheduled for June 2023	Scheduled for Dec 2023
Tandridge			Submitted January 2019	Scheduled for Oct-Dec 2023
Waverley				Part 1 adopted February 2018. Part 2 was scheduled for Sep-Oct 2022.

*Woking Borough Council declared that its plan was up to date in October 2018. Reigate and Banstead Borough Council declared its plan up to date in June 2019.

There has also been debate about developing on greenbelt land in the borough. Greenbelt land includes areas of countryside that are protected from development in order to prevent urban sprawl and encourage development within existing built-up areas. A member of the public attending the committee asked what the council was doing to preserve greenbelt land, and if it would “pause greenbelt development and research brownfield development” as an alternative. Brownfield sites are areas of land that have previously been used for development but are not currently in use.

Councillor **Steven McCormick** said that the council “should follow government policy in its approach to greenbelt”. Government policy is that greenbelt land should not be altered except in exceptional circumstances. Councillor McCormick said: “If alternative options are considered, it is sufficient to release greenbelt land to meet housing needs”.

Councillor Morris said she wished to clarify that the council had “sympathy” with what the member of the public asked. She added: “But it’s too early. There is every intention of not overdeveloping the borough. It may be that we don’t go for these plans, but the evidence is needed. It’s too early to say what we’ll arrive at.”

No draft of a Local Plan has yet been made public. In a recent email to constituents, Epsom and Ewell MP **Chris Grayling** said that he expects “the Borough Council to publish its initial thinking about the plan shortly”. He wrote: “We clearly have a need for new homes locally. There are too many young people who grow up or are educated here but cannot afford to remain in the area. And we have a serious shortage of social housing.” He added: “My worry is that developing the green belt is an easy option for the Council. It is always more complicated to reorganise what has already been developed than to build on a green field, but in our area it is much better to take the more difficult approach.”

Gina Miller, leader of the True and Fair Party, who has announced that she will run against Grayling in the next general election, criticised his comments on Twitter. She wrote: “Not surprising but disappointing that Chris Grayling backed abolishing housing targets, making it nigh on impossible to help young people onto the property ladder nationally, whilst calling for new homes in Epsom & Ewell”.

The first stage in the development of the Local Plan, which includes consultation with residents, is now scheduled for February-March 2023.

See earlier reports on The Local Plan:

Local Planning Matters

The Local Plan to plan The Local Plan

BBC misreports Epsom and Ewell planning?

Another £1/4 m to plan planning

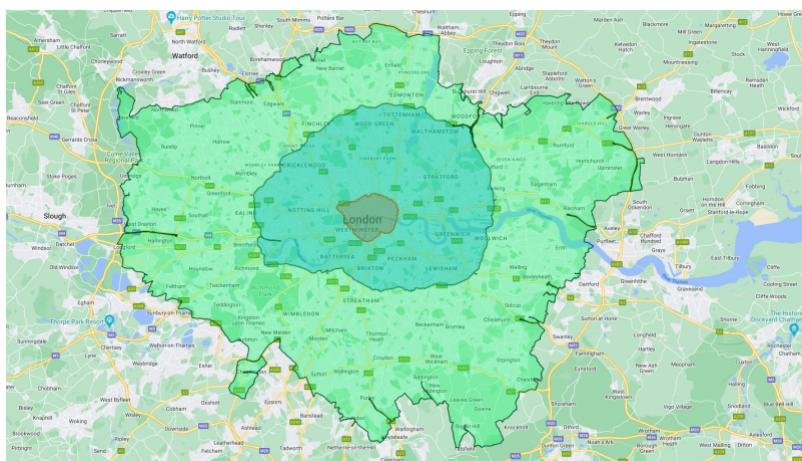
Will Epsom think on the same lines?

28 November 2022



Trams into Surrey have been raised as one “very possible solution” to improving public transport with the expansion of the capital’s **Ultra Low Emission Zone (ULEZ)**. The zone’s expansion was confirmed on Friday (November 25), and Elmbridge councillors had discussed the matter with a Transport for London (TfL) representative the previous evening at an overview and scrutiny meeting.

Councillors raised issues around public transport in the borough, saying it was not as good as that in greater London, and asking what could be done to improve it so people were less reliant on their cars. The ULEZ will be expanded from August 2023 to cover the area currently in the Low Emission Zone boundary. It will mean the zone, where drivers in non-compliant cars pay £12.50 per day if they enter it, will come up to the border with Surrey.



Speaking before the decision had been announced, Elmbridge Councillor **Graham Woolgar** (The Walton Society, Walton Central) said the question of better public transport in Elmbridge was “one of money”. He said it was unlikely the county council would find more money to improve buses in Elmbridge, and TfL would not help either because the area is outside London.

He asked **Iain Killingbeck**, community partnerships lead - west, for TfL: “There wouldn’t be any prospect of public transport being improved, would you agree with that?” Mr Killingbeck said he did not accept that, though TfL’s responsibility was for transport in the capital. He said getting people out of their cars, especially on shorter journeys, and promoting walking and cycling was what TfL encouraged. He added: “That’s what we do at TfL, that’s what we’re all about. So we can help to collaborate, partner and work with you, but we don’t have the responsibility for the county or for this area.”

According to the Mayor’s office, the existing ULEZ has reduced roadside pollution levels by 44 per cent in central London and 20 per cent in inner London.

Speaking after the meeting, the county council’s leader, **Cllr Tim Oliver** (Conservative, Weybridge) pointed to the authority’s £50million investment in electric buses and the same amount in hydrogen buses in the county. There is also an on-demand electric bus service operating in some parts of Surrey including Tandridge and Mole Valley, and due to be rolled out to other areas.

Cllr Oliver told the LDRS: “We will invest whatever we possibly can. I’m a big believer that we are never going to get people out of their cars if there isn’t a good alternative public transport system.” He said the county council had “put the message across” to the London Mayor about the impact the expansion would have on Surrey residents, including in areas such as East Molesey where drivers will be charged if they cross Hampton Court Bridge towards Bushy Park.

The county council, as well as borough and district councils, responded to a consultation that ran over the summer on the plans, highlighting issues such as scrappage schemes, health appointments and requesting to delay the expansion. Cllr Oliver said: “We’ve done everything we possibly can to say: ‘You can’t do this, it’s not fair on our residents.’”

In Thursday’s Elmbridge meeting, Long Ditton Councillor **Jez Langham** (Liberal Democrat) explained his ward bordered London and agreed public transport needed to be better for residents. He pointed to the success of **trams** in cities such as Sheffield and Manchester, as well as in Wimbledon, though he mentioned the Croydon tram crash of 2016 in which seven people died. Cllr Langham said: “Nonetheless it is a successful line, and given the lack of tubes around, it would seem to be a very possible solution.”

Mr Killingbeck said trams were “relatively affordable” but that there wouldn’t be the option of getting a tram line in place before the August 2023 expansion. He added: “I accept, we need to strengthen public transport.”

Cllr Oliver said trams could work in more urban areas of Surrey such as Guildford or Woking, but believed the on-demand buses were better for many of the more rural parts of the county. He added: “[Trams would be] a major infrastructural investment and if the government were to put some funding behind that, then I’m quite sure we would look at it.”

The Mayor of London, **Sadiq Khan**, said: “Expanding the ULEZ London-wide has not been an easy decision. The easy thing for me would have been to kick the can down the road. But in the end, public health comes before political expediency. We have too often seen measures delayed around the world to tackle air pollution and the climate crisis because it’s viewed as being too hard or politically inconvenient. But there’s no time to waste when people’s lives are on the line and we are facing a climate crisis.”

Timeo Danaos et dona ferentes..?*

28 November 2022



Battle for school gets classical with fears of a Trojan Horse. **Kingswood House School** in **Epsom** is asking local people to join hundreds of residents in opposing plans to evict the School from its site and replace it with a small school and housing estate. With objections numbering over 400, local people have risen up in opposition to developer **Steve Curwen**’s plans to evict the 102 year old, 245 pupil school from its site in West Hill, Epsom. **Curwen Group** are working with the landowners, the **Aczel brothers**, with the scheme involving the construction of a small school of only 60 pupils with acute special needs.

It is anticipated that the school would be privately operated on a “for-profit” basis. In what has been described by MP **Chris Grayling** as: “an example of the worst form of business practice”, the Aczel brothers have confirmed that the planning application for the new school will be followed by a second application to build a housing estate on the current school’s playing field.

Amongst its 245 pupils, Kingswood House School is home to 172 local children with special needs and has the highest concentration of special needs pupils at any school in Surrey. The School has been made an Asset of Community Value by Epsom and Ewell BC in recognition of its contribution to the local community.

The School has now filed a detailed objection to the proposed development including reports by independent experts. These documents which are publicly available on the Council’s website include a report by educational expert **Neil Roskilly**, a former member of the General Teaching Council for England and adviser to the Department for Education. Roskilly notes that “...none of the pupils at Kingswood House School would qualify for a place at the proposed new school because their special needs would not be considered sufficiently severe: and the need in Surrey is for schools catering for milder special needs (such as Kingswood House) not acute special needs and therefore the new school would be marketed by its owners towards pupils from outside Epsom.”

Roskilly says that **Department of Education** design guidelines for schools accommodating pupils with acute special needs have been ignored, resulting in classrooms and common areas being too small and that: “... as designed the proposed school would have to operate with a limited curriculum”. As such, Roskilly believes that: “...it is highly doubtful that the proposed school would receive permission to open from **Ofsted** at a post-registration inspection. This is because it would be potentially discriminatory and in breach of the: “Special Education Needs and Disability Code of Practice: 0 to 25Years (2015)”, which states that all SEND pupils should have access to a broad and balanced curriculum”.

Access for the proposed new school would be via West Hill Avenue, currently a quiet residential road to the rear of the Kingswood House School. Transport consultants **Markides** note that the proposed access and parking arrangements are inadequate given the width of West Hill Avenue, its use for residential parking and the presence of trees restricting visibility. When combined with the intended housing estate and inadequate staff and visitor parking for the proposed new school, Markides conclude that: “... the proposed access and internal layout are regarded as seriously deficient and unsupportable.”The problems identified don’t stop with those spotted by Markides and Roskilly.

Officers employed by **Surrey County Council** and **Epsom and Ewell Borough Council** have identified problems relating to both flood risk and ecology. The Surrey County Council Flood Risk, Planning and Consenting Team have reported that they are: “...not satisfied that the proposed drainage scheme meets the requirements...” of the relevant planning legislation and that development should not commence: “....until details of a surface water drainage scheme have been submitted to and approved in writing by the planning authority”.

Curwen’s own ecology reports recommended further reports, not yet done, to establish the presence or otherwise of protected species, Great Crested Newts and Bats. Surrey’s Ecology Officer notes that these reports are still not done and that: “These surveys are required and cannot now be done until spring/summer next year” .

A common concern amongst the hundreds of objections filed so far is that Curwen’s scheme is in reality a sham and a “**Trojan horse**” for the construction of a housing estate. This concern is only likely to have been intensified given the fundamental flaws in the scheme’s design exposed by experts for Kingswood House School’s and the shortcomings noted by Surrey County Council’s Flood Risk team and Epsom and Ewell Borough Council’s Ecology Officer.

A **Spokesperson** for The Curwen Group said to **Epsom and Ewell Times**:

"We are committed to providing a specialist SEND school at the Kingswood House site, and are currently working through technical responses to our application in consultation with the surrounding community."

Those wishing to support or object should do so via the Council's website tinyurl.com/epsomewellplanning and entering the reference number 22/01653/FUL or by email to the case officer, Gemma Patterson at gpatterson@epsom-ewell.gov.uk (ref 22/01653/FUL)

*The Trojan priest Laocoön guessed the plot and warns the Trojans "I fear Greeks, even those bearing gifts".

Dogs against knife crime

28 November 2022



Officers have visited 14 schools and colleges across Surrey over the past week to raise awareness and tackle the grass-root causes of knife crime as part of national police campaign, **Operation Sceptre**. The visits provided officers with a chance to speak to students about misconceptions around the law when it comes to carrying a knife and scenario-based learning to highlight the dangers it can bring.

One of the colleges to take part in the campaign welcomed officers and trainee police dogs, Toby and puppy Yaris, to their campus to learn about the role police dogs play in tackling knife crime.

As part of the campaign, officers also carried out a number of area sweeps, searches and warrants, which in conjunction with the Force's knife amnesty bins, resulted in the recovery of 76 knives.

Detective Chief Inspector **Amy Buffoni**, who leads on tackling knife crime for Surrey Police, said: "We work hard all year round to tackle knife crime and we are encouraged to see that the number of knife crimes in Surrey has reduced year-on-year since 2019. This doesn't mean that we can rest though. Op Sceptre provides us with the opportunity to focus our efforts and reignite conversation around the devastating impact of knife crime on communities, families and young people. Vital to this work is building relationships with local communities so that the message carries down to the next generation. One life lost to knife crime is one too many and it simply should not happen."

Do you have information about someone who carries a knife? You can help save a life by reporting what you know to police. Even tiny details can stop knife crime and keep your community safe. You can call on 101 or if you'd prefer to remain anonymous, you can call the independent charity Crimestoppers on 0800 555 111, or alternatively visit their website [here](https://www.crimestoppers.co.uk).

Worried about a young person? For help and support as well as advice on how you could help them, visit [#knifefree](https://www.knifefree.org) here.

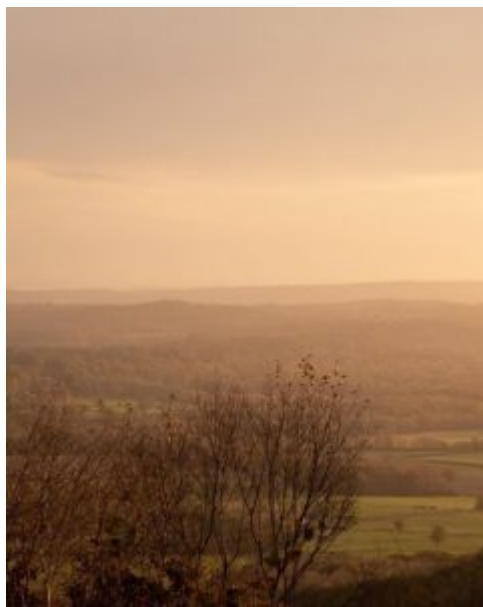
If you are in danger or need immediate help, always call 999.

Save a life and surrender your knife. No questions, no arrest. **Surrey Police** have knife banks located at the following locations in Surrey:

- Staines Police Station (22 Kingston Rd, Staines, TW18 4LQ) - open every day, 8am to 10pm
- Woking Civic Centre (Civic Offices, Gloucester Square, Woking, GU21 6YL) - open every day, 8am to 10pm
- Guildford Police Station (Margaret Rd, Guildford, GU1 4QS) - open every day, 8am to 10pm
- Elmbridge Council Offices (Civic Centre, High St, Esher, KT10 9SD) - open Monday to Friday, 8.45am to 5pm
- Reigate Police Station (79 Reigate Rd, Reigate, RH2 0RY) - open every day, 8am to 10pm

Winter walks in the Surrey wilds

28 November 2022

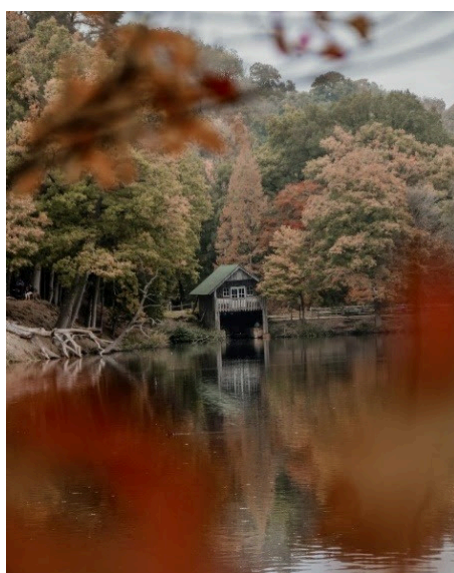


The darker mornings have closed in, and the clocks have gone back, so it's fair to say summer is officially over, and the cold season has begun. While the cosy evenings are one of the best bits about the colder months, staying in all day, every day – when a lot of people are working from home – can be a little bit draining. A brisk winter walk can be the perfect respite from the day-to-day routine, and it's great for both mental and physical health as well. In fact, cold weather can help the body fight infections, and it is really good for skin health as it tightens cuticles and pores!

With all that in mind, it's time to pop on the walking boots, pull on those winter woollies, and explore the stunning beauty of Surrey in all its frosty delight. There is no shortage of trails to discover, but to help any intrepid nature walkers get started, Berkeley Group has compiled their top 5 winter walks across the county.

1. Hindhead Commons and the Devil's Punch Bowl

To be genuinely amazed by the creations that nature can produce, you must visit the Devil's Punch Bowl at Hindhead Commons. The almost 700-acre natural amphitheatre is the biggest spring-formed feature in Britain; walk the 4.5-mile surrounding trail to be calmed by the streams and heather-covered slopes. Thanks to the Hindhead Tunnel, the road that was once the A3 is now covered with 200,000 trees and shrubs, providing perfect terrain for grazing cattle and wild ponies. Children will love exploring the wood for mini-beasts, while adults will be stunned by the incredible views from the top of Gibbet's Hill, the second-highest point in Surrey. On a clear day, the views even stretch all the way to Canary Wharf!



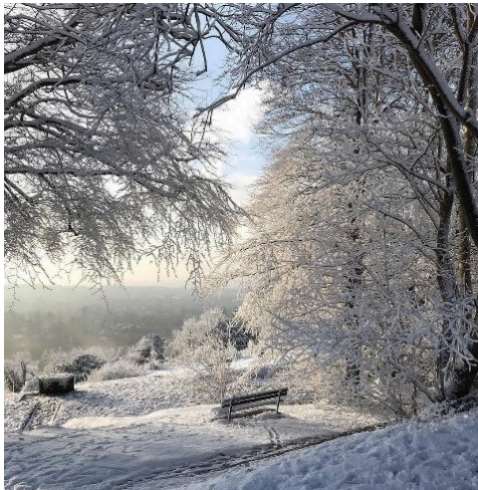
2. Winkworth Arboretum

Created by a local doctor whose goal was to preserve the nearby wooded hillside, Winkworth Arboretum has become one of Surrey's most stunning natural beauty spots. Located in Godalming, the area is now home to over 1,000 varieties of trees and shrubs and is celebrated for its changeable seasonal landscape. The Winter Garden boasts dazzling yellow mahonia's and vivid camellias during colder months to brighten up the day. Take the path down to the boathouse to find a peaceful sanctuary overlooking the magnificent lake or explore the woodland and take the Winkworth to Oakhurst 4km trail to try and catch sight of rare wildlife.



3. Hatchlands Park

Only 45 minutes from Greater London, Hatchlands Park offers those who live in the city a convenient winter escape. Open 363 days a year, this park is the ideal place for a snowy stroll, whether it be with your family, four-legged friend or simply for some much needed ‘you’ time. Set in 400 acres of magical woodland and glistening leaf-lined paths, choose from a number of trails to spot a range of birds and insects. When visiting with children, make sure to say hello to the recently fostered donkeys Callum and Morris or pop over to the Wizard Wix’s Willow Warren, where kids can climb the treehouse or make their own den!



4. Reigate Hill

Reigate Hill, one of Surrey’s most popular natural beauty spots, is not to be missed in winter. For incredible frost-laced views, take the 3-mile walk through crunchy grass and shimmering woodland to admire the extensive landscape of the Weald and South Downs. For a longer trail, take the 7-mile Reigate and Gatton Park walk for more stunning scenery and the chance to pop into a pub on the way. Alternatively, for the history buffs, pay a visit to the Inglis Memorial and Reigate Fort, once a 72-mile defence scheme to protect London from invasion.



5. Newland’s Corner

Only four miles east of Guildford, Newlands Corner opens a wealth of walking and cycling trails and some of the best views of Surrey Hills. Also made famous as the place Agatha Christie memorably staged her short-lived disappearance in 1926, Newlands Corner offers a delightful place for a wintry escape in nature. Newland’s Corner has something for everyone: empty fields for a pup to run around in, a challenging hike for the adventurous types, or even a scenic cycle ride for the next Sir Bradley Wiggins. There’s even the perfect pit-stop to enjoy a tippie at either the Silent Pool distillery or Albury Organic Vineyard. If you are considering relocating to this magnificent part of South East England to enjoy some of the most beautiful landscapes, browse Berkeley Group’s developments in Surrey for the latest opportunities.

Image Credits: 1. Hindhead Commons and the Devil’s Punch Bowl: @Martingarnett_photography 2. Winkworth Arboretum: @Wakinguphere 3. Hatchlands Park: @sarahinsurrey 4. Reigate Hill: @Ilovereigate 5. Newland’s Corner: @ordnancesurvey

Epsom Playhouse hosts a little horror.

28 November 2022



Leatherhead Operatic Society left the audience laughing and cheering with its production of **Little Shop of Horrors** at **Epsom Playhouse**, a musical comedy directed by John Harries, choreographed by Louise E Wilson and musically directed by Sam Fisher, based on the 1982 off-Broadway musical of the same name.

A failing flower shop on skid-row run by Mr Mushnik (Ben Horseburgh) is almost at the point of closing due to a lack of clientele. A Venus flytrap-looking plant, (Toby James) mysteriously appears during a total eclipse of the sun, attracting Seymour (Daniel Burns) to purchase it and name it after his love interest (played by Ellie-Claire King). This plant, however, is not an ordinary plant – it speaks, sings and lives on human blood and flesh, bringing new customers and, along with that, money and a name.

At first, Seymour can sustain Audrey II with his own blood, but this won't be enough for the ravenous plant who promises Seymour his desires, a success story that could be "bigger than hula hoops". What is Audrey II's goal?

This is not the only question of morality that echoes throughout the performance: how far would you go for love? Or fame, or wealth? And should you feed the sadist-dentist boyfriend of your love interest to your human-consuming plant in order to keep it growing and attract customers? The story ultimately examines the extent to which individuals (Seymour, specifically) will go in order to be successful.

The cast's performance is remarkable and leaves you questioning what you would've done in Seymour's situation, with each character forcing the audience into an empathetic view of the situation. And for those who are already familiar with the story, a different ending to the 1986 adaptation of Little Shop of Horrors alongside the stellar performances makes it worth experiencing again.

The opening night on Wednesday 23rd November was a resounding success, and the show will continue throughout the rest of the week. The performance will run until the matinée show at 2:30 pm on Saturday 26th November.

Cycling for Motor Neurone Disease

28 November 2022



Greg Culshaw of **Toyota's Epsom** Head Office (GB), has completed a gruelling 24-hour static bike ride, putting him on course to raise more than £40,000 for the Motor Neurone Disease Association. Greg is the General Manager, Customer, Network and Quality Support.

Greg began his challenge at 10am on Wednesday 17 November and was joined by a number of colleagues, including **Agustin Martin**, Toyota (GB) President and Managing Director, who completed stints on static bikes alongside him, to give him encouragement. Paralympic cyclist, **Jody Cundy**, and **Mark Chapman**, Director of Finance of the MND Association, helped cheer him on at the start of his marathon.

Toyota (GB) is halfway through a three-year partnership with the MND Association and has so far raised more than £78,000 for the charity, which focuses on improving access to MND care, funding research and campaigning on behalf of the MND community.

Greg was inspired to take on the challenge in memory of a Toyota colleague, **Rachel Rollason**, who died from motor neurone disease earlier this year. He commented: "Rachel and I spent four years working together in the Customer Services Division and it's fair to say that she made a lasting impression on me. Her boundless energy and devotion to getting things done were inspiring. She operated on 'no limitology' before I had even heard the phrase."

He added: “This has been a brutal challenge, but at the same time I’ve been focused on completing it for Rachel and the MND Association. The idea started in a conversation with Rachel and in her last text message to me, she told me how proud she was of me for taking it on. She continues to inspire me and in turn, made me proud of her.”

To date, Greg has raised nearly £16,000 through his Just Giving page: <https://www.justgiving.com/fundraising/Greg24hrBikeRide>. This will remain open for donations until the end of November.

Toyota (GB) has pledged to fund-match the total raised by Greg, which means the charity should receive around £40,000 to help it keep up the great work it does on its five key promises:

1. To make MND treatable and ultimately find a cure.
2. To ensure everyone gets the help they need, when they need it.
3. To make every day with MND count.
4. To ensure people with MND are heard
5. To ensure that nobody with MND faces it alone

Mark Chapman, Director of Finance at the MND Association, commented: “Greg’s challenge is particularly poignant because he’s doing it in memory of his colleague Rachel. It’s brilliant to see so many staff members from Toyota rally behind him to honour her, knowing that every penny raised will make a huge difference to people living with and affected by MND.

Last year we provided £1.4 million of support grants for 2,479 people living with the disease.

The grants provided by the MND Association have helped people living with MND to maintain their independence and improve their quality of life, and we couldn’t do this without partnerships with companies like Toyota.”

Jody Cundy, eight-time Paralympic Champion (three swimming, five track cycling) commented: “It was a pleasure to join Greg for the first hour of his 24hour charity ride for MNDA. It was a tough challenge, but I hope my support and presence helped make it a little easier.”

Agustin Martin said: “Watching Greg complete this challenge while we went about our daily business has been humbling for all of us at Toyota. We congratulate him for his for raising such a significant sum for the MND Association, our charity partner, and for helping to honour the memory of our much-loved colleague, Rachel Rollason.”

Defence of Surrey M25 policing

28 November 2022



M25 protesters acting as “dead weights” means they take longer to be arrested, according to **Surrey’s Police and Crime Commissioner. Just Stop Oil** activists brought parts of the M25 to a standstill this month as part of their ongoing campaign calling on the government to take more action on the use of fossil fuels.

Surrey’s Police and Crime Commissioner, elected to hold the county’s police force to account, said she had attended the protests on a day when five were arrested. She added she is “enormously proud” of Surrey Police’s response. Responding to a question from Tandridge District Councillor **Mick Gillman** at a meeting of the police and crime panel on Monday (November 21), **Lisa Townsend** said she disagreed with the view that Surrey Police were not doing enough.

The meeting, at which councillors from each of the county’s authorities can put questions to the PCC, heard she had also received “an awful lot” of criticism from people about police not negotiating with protesters, and not listening to their demands. She said: “It doesn’t matter what reason somebody is breaking the law for. If they’re breaking the law, the police will get involved regardless of what their greater or not aims. I am enormously proud of the action that Surrey Police took over these protests and I will continue to praise them for it.”

Cllr Gillman’s (OLRG Alliance, Burstow, Horne & Outwood) question said he had found it impossible to explain to residents when asked why more action was not being taken by Surrey Police with the protesters. He said: “Residents expect the police to apply the law without fear or favour and there is strong feeling that lack of decisive action by police when the protests started have only encouraged more protests as those involved feel they can get away with this. Can I have an assurance that you will be using all your influence with the police to insist they now apply a zero-tolerance approach to any protesters who block or disrupt the highway?”

He followed up in the meeting that one resident had said to him it should just take minutes to arrest someone, and not “hours of them sitting in the road” as had happened on previous demonstrations by the group. Mrs Townsend said: “The idea that police haven’t acted swiftly I’m afraid is just rubbish and I absolutely won’t accept that criticism at all.”

On a day when protesters were climbing the gantries above the M25, Mrs Townsend said she had seen four of the arrests

that took place, and that once the arrest was made, the police then had to ensure it was “absolutely safe” before they went up to get protesters down. She added: “It’s not simply a case of saying ‘you’re arrested’ then they come down quietly. In two of the cases I saw, the protesters followed a well known tactic of playing dead, basically becoming a dead weight and insisting that officers go and physically remove them. That can’t happen in two minutes, although the arrest has been made. The person then needs to be lawfully and carefully removed so that everybody’s safety is protected, not least the Surrey Police officers who are up there.”

Ewell Village to get an uplift?

28 November 2022



High Street improvements to come in **Ewell** to revitalise the town and create spaces that are safer and more attractive? **Surrey County Council**’s Ewell project team has worked closely with a group of residents who originally campaigned for change in the village. **Surrey County Council**’s Cabinet is due to discuss £30 million of funding to deliver seven capital projects identified in the **Surrey Infrastructure Plan**.

The proposals for Ewell state:

Ewell Village currently suffers from significant levels of traffic passing through the village, with an imbalance between traffic and pedestrians, both in terms of space consumed and dominance exerted. Pedestrian movement in the village is notable, particularly that of children travelling to/from school, but resident feelings about road safety are poor given the high volumes of traffic.

This project will deliver improvements to the High Street that will support revitalisation of the village through restricting vehicular access to some degree along the High Street, bringing about more pedestrian-friendly spaces that are safer and more attractive. It will bring improvements to local environmental sustainability via new street greening in addition to reducing vehicle emissions, will enhance the economic resilience of existing and new retail outlets through the creation of more attractive spaces that encourage longer dwell times, and will enrich social cohesion by bringing about more opportunities for people to connect with one another.

Epsom & Ewell Borough Council (EEBC) is committed to continued engagement with SCC to develop plans for the village and welcomes further collaboration with the community and community representatives to help shape the scheme.

The total scheme cost is approximately £2.5 million. SCC will be seeking a contribution of 50% from third party funding. Funding from EEBC will be determined once a preferred option is agreed.

Other proposals for the County include:

Projects include town centre and highway improvements, active and sustainable travel schemes, and flood alleviation schemes.

£8.64million of the funding would come from Surrey County Council, with the rest coming from external funding sources. These projects include the implementation of active and sustainable travel schemes to provide Surrey residents with greener options of travel, whilst improving air quality and creating healthier places to live. There are also town centre regeneration schemes to support economic growth and provide the necessary infrastructure for growing communities. These infrastructure projects are critical for the council to deliver its ambitions for the county now and into the future.

The seven capital projects are:

Town centre schemes

- High Street improvements in both Ewell and Horley to revitalise the town and create spaces that are safer and more attractive. The Ewell project team has worked closely with a group of residents who originally campaigned for change in the village and in Horley, investment is being made following the impact of Covid on how the town is used by residents.
- Town centre regeneration in Caterham through flood mitigation works, improved connectivity and improvement to public spaces in Caterham Valley and Caterham on the Hill.

Active and sustainable travel schemes

- Electric bikes (E-bikes) in Guildford - implementation of a town-wide bike share scheme to offer an alternative to car trips within the borough.
- Woking sustainable transport improvements - improvements for walking, cycling and bus infrastructure in the

east of Woking, improving connections between Woking town centre, Sheerwater and West Byfleet. For this scheme Surrey County Council have submitted a bid for £12million to the Department of Housing and Levelling up as part of round two of Levelling Up funding.

Highway improvement schemes

- A320 North of Woking improvements – Plans to make all junctions and roads on the busy stretch between Chertsey and Ottershaw work well together to improve traffic flow. Improvements for walkers and cyclists, including new crossing points and wider foot and cycle paths and improved access to public transport.

Flood alleviation schemes

- Flooding Alleviation Programme 2023/24 – A mix of schemes and interventions focusing on flood resilience measures, flood risk reduction and protection against flooding.

Cabinet will also be reviewing the allocation of £2million funding to support the expansion of the on-street electric vehicle chargepoint roll-out. The funding required would support the installation of a comprehensive network of publicly accessible chargepoints right across the county. This is essential to support residents who don't have off-street parking to transition to electric vehicles. Surrey's Local Transport Plan has identified as one of its top priorities the reduction of emissions and increase in energy efficient vehicles, specifically to promote zero emission and smaller vehicles. Cabinet will also be discussing the appointment of a new supplier to deliver a wider roll-out of chargepoints across the county to meet the increased demand.

Matt Furniss, Cabinet Member for Transport, Infrastructure and Economy, said: "Investment in infrastructure is essential for sustainable economic growth and to cater for the needs of Surrey's businesses and communities.

"The projects being presented to Cabinet take into consideration changing infrastructure requirements for our communities. Following the Covid pandemic, the way people live and work has changed. These projects consider new travel patterns and behaviours, whilst focusing on improving local places."

Surrey County Council News and with additional reporting on Ewell by Epsom and Ewell Times

Cllr Dalton leads street night light fight

28 November 2022



Epsom and Ewell's Councillor Hannah Dalton (Residents' Association, Stoneleigh) said she lived in a zone five area, but when she got the last train home, she would still get the torch out on her phone in order to get home safely once off the main streets. Surrey's Police and Crime Commissioner has hit back at a claim she "doesn't understand what she's talking about" as she says the decision to turn street lights on at night is the county council's responsibility.

Lisa Townsend said street lighting has been "one of her great frustrations" with "mixed messages" at council level, as another councillor shared her experience of walking home with her phone's torch on to get back safely.

In a heated meeting of Surrey County Council's police and crime panel, in which councillors and non-elected members ask questions of the PCC, Runnymede Councillor **John Furey** (Conservative, Addlestone South) said residents could make a request to get lights switched back on in certain areas.

Street lights on some of Surrey's residential roads started to be turned off at night in 2017, usually between the hours of 1am and 5am, to save money.

Epsom and Ewell's Councillor Hannah Dalton (Residents' Association, Stoneleigh) said she lived in a zone five area, but when she got the last train home, she would still get the torch out on her phone in order to get home safely once off the main streets.

In response the elected Conservative PCC said: "You and I have both, I suspect, walked home from train stations using the light on our phone, clutching our keys, speaking to somebody on the phone hoping that if anything happens, there will at least be a record but conscious that by the fact that we're on our phone means we're not paying the proper attention to our surroundings. Any woman I know has been there."

She said she got "very annoyed" when told by officers that the reason that lights hadn't been turned on was because police hadn't asked for them to be. Mrs Townsend added: "That's not the reason. It's entirely in the county council's gift as to whether they turn them back on or not. I'm frustrated by the mixed messaging that my office gets I'm frustrated by

the different answers that I get when I ask about it.”

Calling on councillors to lobby the county council that where residents didn’t feel safe and wanted street lights switched back on, they should be, she added it was not for the police to be making the case for residents.

Mrs Townsend added: “Something should not have to happen to us, or to any other woman or man, in order for a case to be made to put the lights on. If you don’t feel safe, and it’s what the community wants, the lights should be switched on. I couldn’t be clearer in that.”

Cllr Furey had previously interrupted Mrs Townsend, saying: “This is quite out of order. The PCC doesn’t understand what she’s talking about.” He said the police would be asked for their opinion if there was a request for residents to switch lights back on, but that the request went through the county council and that if there was a case, the lights would be switched back on.

Mrs Townsend, saying she had been “rudely interrupted” by Cllr Furey, said she understood the process but was concerned about the “extra bureaucracy” and said she didn’t want to see any more delays to requests. She added: “My point is police shouldn’t have to become involved in it. If a woman doesn’t feel safe and she wants to have the lights turned on, that should be a matter for the county council. It should not be a matter for policing because the police cannot interfere on whether somebody feels safe or doesn’t.”

Surrey County Councillor **Keith Whitham** (Conservative, Worplesdon) said it was “not a black and white situation”. He said in his area he had seen successful examples of lights being switched back on where Surrey Police had supported residents in their appeals to the council. Mole Valley Councillor **Paul Kennedy** (Lib Dem, Fetcham West) said the blanket approach “simply doesn’t work” and that people had “to work really hard to try and get the lights back on.” He said he would be taking it up with the county council, but also recognised that many people in his rural area valued and wanted to protect their dark skies.

On the wider issues of the safety of women and girls, the meeting heard the responses to a survey carried out in April and May 2021 which showed that 45.6 per cent of the 5,427 participants felt unsafe in their neighbourhoods at night, and 55.7 per cent felt unsafe in the nearest town centre at night. A report into the findings said: “One of the main themes when respondents were asked to explain why they sometimes feel unsafe, was lighting, or lack of it in local areas. A lot of these comments mentioned the lack of street lighting in their local area, and how this made it feel unsafe when out and about after dark.”

Mrs Townsend pointed to the almost £1million received from Government to help tackle violence against women and girls in the county, including training for teachers in schools. She said: “We’re not going to police our way out of this problem. We do need to take a whole society approach.”

Neighbouring crematorium plan goes up in smoke.

28 November 2022



Reigate and Banstead borough council has shelved its plans for the area’s first crematorium despite having spent £350,000 on the project so far. The facility could have brought in more than £1.5million for the authority, but was rejected by councillors at a planning meeting in September 2021, despite the officer recommendation to approve it.

A decision then had to be taken whether to submit another application, proceed with a third party partner or appeal the decision, though it was then discovered the council could not appeal its own planning decision.

Reigate and Banstead Borough Council’s commercial ventures executive sub-committee considered a report into “project baseball” on Thursday (November 17) which detailed the closure.

The project, first brought to committee in December 2019, would have provided the borough’s first crematorium, and has been funded by the council through its reserves, or savings. Plans were refused at planning stage because of its location in the greenbelt, with more than 500 public objections to the application.

Council documents show the aim of the project was to provide a much needed and greatly improved level of service to the residents, while also bringing in income for the authority. More than 80 per cent of of dead people were cremated in the UK as at 2021, and facilities in neighbouring boroughs were found to be operating beyond their capacity.

Documents said: “[They] were not considered to serve customers, and particularly local people, well at a difficult time of life, either in terms of service, cost, environment and location/accessibility.” They went on to say the crematorium would aim to deliver “a higher quality facility and service” than the nearest competitors, closer to residents and those near the borough, and also bringing money in for the council.

Operating at full capacity, it was estimated the crematorium could have brought in more than £1.5m per year.

Wick burned at both ends

28 November 2022



Wick FC 0-2 Epsom & Ewell FC. Saturday 19th November. Southern Combination League – Division One.

A goal towards the end of each half was sufficient for our boys to see off the challenge from second placed Wick at Crabtree Park on Saturday; a result which extends our lead at the top of the table to five points.

However, this result was more than just the win. Last Saturday we threw in an awful performance against Worthing United. So poor in fact that our football club chose to hide away from even releasing a report, although obviously there was still one on this site, as supporters will always be kept informed of what is going on here. In that report I wrote that if we were able to defeat Wick and Shoreham in our upcoming matches that we would be able to write off last week's aberration as a freak result, and we are now half way towards being able to do just that.

Despite the substantial amount of rain in midweek, the pitch passed the inspection and looked in fairly good condition from pitch side. We took the field with two changes from the starting eleven against the Mavericks seven days previously; Johnny "Sonic" Akoto came in at right back with Gideon Acheampong moving across to cover the absent Aaron Bogle, who had only played 45 minutes of that Worthing United match before being replaced. Further forward Jaevon Dyer came in for Gavin Quintyne, but found himself out on the wing with Jamie Byatt playing down the middle. Additionally, we would have three new Salts in this match as Kevin Moreno-Gomez (Horley Town, Burgess Hill), Ben Bauchop (Farnham Town) and Oliver Thompson (Colliers Wood United) would all see action off the bench.

The opening exchanges were fairly even, with a slight ascendancy in favour of the home team, although as the match progressed we began to hold a greater share of possession. Athan Smith-Joseph was giving a lot of trouble to the two defenders that were covering him, although the end product never found a team mate on this occasion. Balls in to the near post were cleared away by defenders, while deeper crosses just always seemed to elude Byatt in the middle.

Dyer was slightly quieter in the opening half, but actually appeared to carry more of a threat to goal when he had the ball. He was upended after quarter of an hour just outside the penalty area, and Ryan "Butch" Smith's shot was well saved low to his right by Keelan Belcher. Byatt put Josh Owen through on goal with a clever ball, but the defender did well and forced him away from goal. Then Smith-Joseph sent a shot just over the bar after he cut in from the left. Just after the half hour a Wick clearance hit a team mate and rebounded kindly for Byatt, but he chose to pass instead of shooting and probably instantly regretted it as his ball was too far ahead of Owen.

However, it was apparent that we were the ones pushing more and more for the opening goal and it came in the only minute of first half injury time. Akoto got away down the right wing and he pulled the ball back to Dyer, standing around fifteen yards out. His shot went across Belcher but was blocked by a defender on the goal line, although Byatt was alert as ever and nipped in to force the loose ball into the net from around half a yard out before the defender could reach it.

This was a fair half time score and heading towards the evocatively named Condemned Tree end in the second half we continued to push. Dyer was brought down, leading to a bit of a scuffle, although nothing came of it. The home side sent a looping header wide of our goal from a deep free kick, but we were back on the attack soon after and Dyer beat a number of men as he ran across the edge of the Wick penalty area before striking a shot back across Belcher, which went just beyond the far post with Byatt steaming in and unable to reach it. The only thing that ended up in the net was the covering defender!

The game took a serious turn in the 62nd minute when Tommy Farr made a good run on the right for Wick, only to stumble over just outside the box. It looked comical when it happened, but it was soon apparent that he was in a lot of pain and the game stopped for ten minutes while Farr received treatment for an injured knee before being stretchered off. The home team advised after the match that it didn't appear too serious, which was a relief to all.

The game restarted and was followed by the best chance of the match for the home team. They held some good possession down the right and as the ball came in, Aaron Tester appeared to almost flick at the ball with the outside of his foot from just inside the box and it cleared Kane Charles' bar by inches.

Our first substitute Josh Alder replaced Byatt with ten minutes of official normal time to play, although due to the earlier injury it would become almost twenty-five. The match then saw a solid challenge from Brad Peters that Johan Van Driel reacted to and he got up and pushed Peters over from behind. However, the ball was up at the other end of the field by then and none of the officials saw it conclusively. The referee chose to award just the yellow card, which was probably the correct decision, although we have certainly seen red cards issued before for similar infringements.

A few minutes later Wick tried a long range dipping shot that cleared our crossbar by inches, rippling the net as it landed and convincing a few excited supporters that their team had equalised. In response Alder broke through on the left but his shot was well kept out by Belcher's leg. However, he would get a second opportunity in the 96th minute as Wick pushed up and Zach Powell's long clearance cleared the defenders on the half way line and Alder was through again. This time he ran in and finished clinically with a low shot across Belcher which just clipped a glove, but still nestled in the far corner

for our second goal.

Both teams had a final chance as the time ticked down. Dyer was denied in the act of shooting by a superb block challenge from Harry Williams, while at the other end Dave Crouch tried his luck from distance, but Charles was able to tip the ball onto the post and away for a corner that ultimately came to nothing. Finally, after around fifteen minutes of injury time the whistle blew to confirm that all three points were Epsom bound.

Overall, this was a vastly improved performance on the previous one. Instead of a porous defence that looked like it might concede to Worthing United at regular intervals, we kept Wick at arm's length for much of the match and restricted them mostly to long range efforts. Up front we created more opportunities, while in midfield we took charge of the match, which was something we had struggled to do in our previous contest. The only black mark on the day was a rather harsh booking for Nick Wilson who will now miss the important Shoreham match on Saturday through suspension. I'm not sure why the club chose to put this information in the public domain, but if we play as well next week as we did in this match, it shouldn't make any difference as we have decent strength in depth across the squad.

Epsom & Ewell: Kane Charles, Johnny "Sonic" Akoto, Zach Powell, Ryan 'Butch' Smith, Brad Peters (c), Gideon Acheampong, Athan Smith-Joseph, Nick Wilson, Jamie Byatt, Josh Owen, Jaevon Dyer

Subs: Josh Alder for Byatt (80), Kevin Moreno-Gomez for Smith-Joseph (91), Gavin Quintyne for Wilson (97), Ben Bauchop for Owen (100), Oliver Thompson for Powell (102)

Report Source: www.eefconline.co.uk

Locally trained artist's Ewell exhibition closes tomorrow

28 November 2022



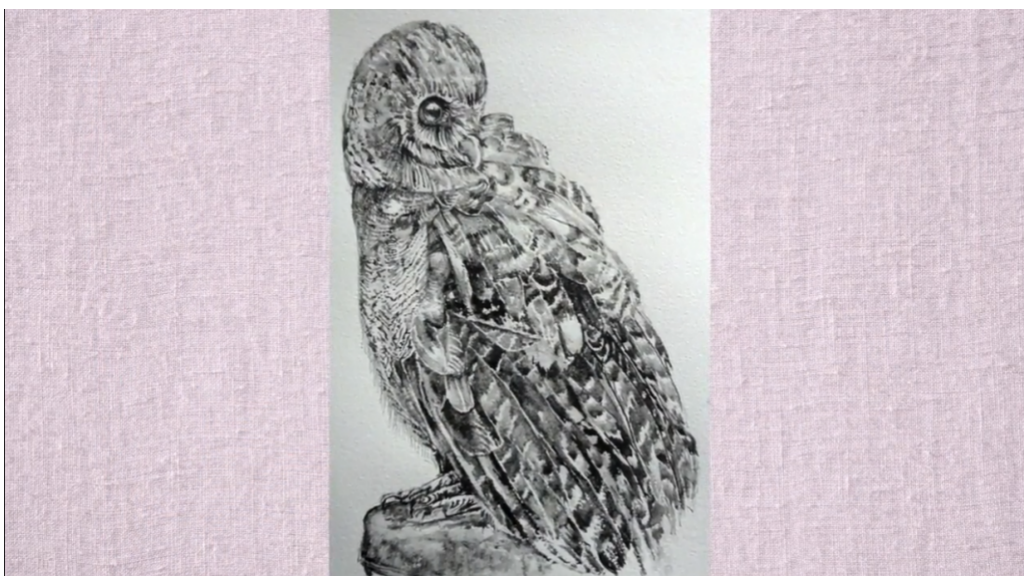
Ending Saturday 19th November your last chance to see selected works of the artist **John Whurr** at his solo exhibition in **Bourne Hall Gallery**. His work varies from pencil sketches of birds and animals to watercolour landscapes and detailed pen and wash of well known buildings in London and elsewhere. Also included is a large collection of portraits in ink and pencil - WG Grace is portrayed at Lords Cricket Ground - the pop artist Rod Stewart in his early days - groups of famous racing drivers and rugby players. His gift for depicting people is incredible. I particularly enjoyed the picture of the actor Leo McKern playing the part of "Rumpole of The Bailey". In this one off incredible exhibition, colour paintings of classic cars, motorbikes and railway trains demonstrate John's wonderful skill in depicting shiny surfaces like metal and glass. Detailed pictures of buildings and cityscapes show his interest in architecture. A very modest and down to earth person - John has been awarded many accolades for his work but prefers to maintain a low profile.



John Whurr has always had an interest in drawing from an early age. He went to school in **Carshalton** and became chief draughtsman for Shell Coal and later worked for the BBC . He studied at **Sutton Art College** and spent time learning watercolour skills at the **Epsom Further Education Centre**. Over the years he has had several exhibitions alongside other artists at Bourne Hall and other places with many of his works going abroad from Australia to the USA and many European countries.



He was commissioned to provide five pictures for the cultural centre in Nagasaki, Japan. He loves sketching and his first love is architectural/coastal subjects but his interest in landscape will get him reaching for the paint palette. For many years his drawing has extended to caricatures and more recently portraits. John is a member of the Society of All Artists & The Molesey Art Society. He's enjoyed being 'artist in residence' at the Brooklands Museum Weybridge.



Reporting by Audrey Ardern-Jones

The dreadful price of dangerous speeding

28 November 2022



A Woodmansterne man is facing 2 years and 8 months behind bars after making a reckless decision to show off his car in front of his friends by driving at excessive speed which resulted in the tragic death of a 17-year-old girl.

Leanne Taylor, who was the back seat passenger at the time, was sadly killed in the collision which took place in Tupwood Scrubbs Road in Caterham on the evening of Saturday, 1 February 2020.



Leanne Taylor

Describing Leanne as “definitely one of a kind with a massive individual personality”, her family said today that Leanne’s “lasting legacy is giving a gift of life to four people”.

Her mother, **Mary Allison**, said: “Over the last two years and nine months, we as a family have waited for justice for our Leanne. How I wish my Leanne was alive and had the chance to live life to the full, it’s heartbreaking. We would like to thank all the emergency services who were there on the night, to the staff at St George’s treating our Leanne with dignity and respect. A massive thank you to the team from the Surrey and Sussex Police Serious Collision Investigation Unit for all the work they have done to build this case, for justice for our Leanne. A big thank you to our family liaison officer and all involved.”

The driver of the car involved in the collision, **Callum Hone**, 24, of Manor Way, Woodmansterne, was sentenced to 2 years and 8 months’ imprisonment when he appeared at Guildford Crown Court yesterday (17 November). He has also been disqualified from driving for 5 years, which will start when released from prison and if he was ever to reapply for his driving licence there would be the requirement to complete an extended re-test.



Callum Hone

Hone had pleaded guilty to causing death by dangerous driving on the first day of his trial at the same court on 10 October.

On the evening of the collision, Hone had picked Leanne and another friend up in his BMW 320 where they joined another group of friends at Caterham Viewpoint. They were sitting in their cars talking and listening to music when Hone made the fatal decision to do a drive-by. Hone set off, with Leanne and her friend still in the car, and was driving at speed when he failed to negotiate a left hand bend, resulting in the car colliding with a tree and overturning a number of times before landing on its roof.

Leanne’s body was recovered from under the BMW and she was taken to hospital, where she sadly died five days later as a result of the catastrophic injuries she had suffered in the crash.

On sentencing, **Judge Black** said: “I have no doubt you were showing off to your friend. You were fully aware of the risk driving the way that you did with at least one passenger unrestrained within the car”

Investigating Officer, **Lauren Upton**, from the Serious Collision Investigation Unit, said: “Our thoughts are with Leanne’s family and friends following her tragic and senseless death. I would like to thank Leanne’s family for their patience and dignity throughout this investigation. Hone was estimated to have been driving at a speed of between 55 and 60mph at the time of the crash, a speed that was unsuitable for the road conditions. Leanne’s death is a stark reminder of why all young drivers should think twice before they risk the lives of themselves and others by putting their foot down on the accelerator to show off and try to impress their friends. Sadly, this case is an example of the devastating consequences Hone’s reckless and irresponsible actions can have. Speed kills – it is simply not worth the risk. We will continue to investigate serious collisions and bring to justice those who compromise the safety of themselves and others on our roads

in Surrey.”